

Summer Student Assistance

- Need to order something?
- Your badge isn't working?
- Need a repair or install?
- Copier help?
- Facility issue?



Need information on ANYTHING during this Summer?

CFN Operations Group is here to assist you. **JUST ASK!**

Environment, Safety & Health Team



Wai Lin Ng
ES&H Manager
Ext 7153, Room 2002



Ryan McFadden
ES&H Representative
Ext 6086, Room 2010



Matt Harris
Hazardous Waste Rep
Ext , Room 2010

Emergency Evacuation Building 735 Alarms Protective Action Zone - Yellow



1. Fire alarm (fire/ smoke)

Exit building using nearest exit. (*Do not use the elevator*)



2. Toxic gas alarm (3 bongs) –

“Hazardous gas release, Exit from the north side (front) the building only.”

Click the icons
to hear the
alarms



- (Lab) Secure your experiment and leave the lab immediately
- (Office) Take your keys, close the door and leave the building immediately
- Meet your group, West side parking lot (**Outdoor Assembly Area**)
- Wait for instructions from Local Emergency Coordinators



Emergency Shelter-in-Place Building 735

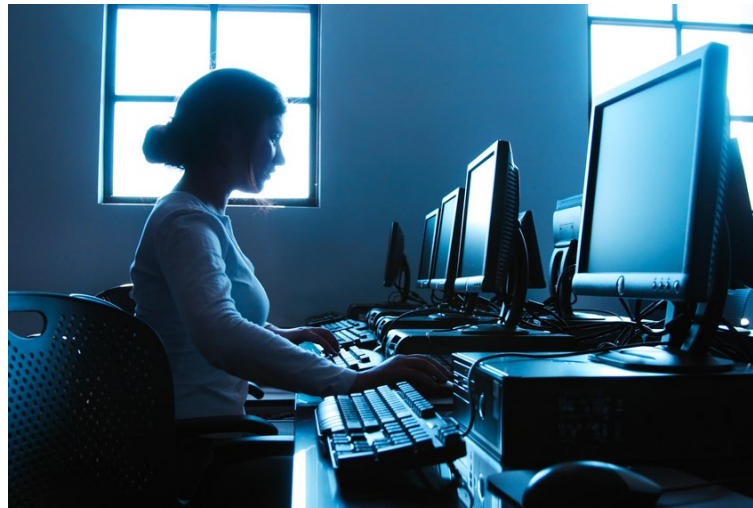
If you hear a Continuous Site Siren, meet in the building central hallway towards the back, first floor.



Indoor Assembly Area

Working Alone/After Hours

- Working hours are 8:00 am - 6:00 pm
- Exterior doors are locked after-hours (6:00 pm – 7:30 am)



Personal Protective Equipment (PPE)

Check placards outside of your work area for specific PPE requirements.

Anyone entering a lab/ work area is **required** to wear posted PPE (e.g., safety glasses, lab coats and covered shoes).

Specific tasks may require specialized PPE (e.g., cryo gloves, face shields, long-sleeve shirts)

For assistance, ask your **mentor/supervisor** or **ESH representative**.



Lab Safety – Use of Chemical Fume Hoods

- Use hood when handling toxic or volatile materials
- Verify proper airflow during high hazard procedures^A
- Check for annual hood certification sticker^B
- Position sash at or below arrow for safe use^C
- Work at least 6” inside the hood face
- Keep hood clean and free of clutter
- Do not block rear exhaust slot or airfoil opening
- Keep storage inside hood to a minimum
- Raise large items 2” above work surface



Do not ignore hood alarms!

Contact ESH representative or Operations team

safety glasses vs. goggles

Protective Eyewear - Meets ANSI Z87 Standard



Good for:

- Impact
- Low chemical splash potential

Check out product selector: <https://www.uvex.us>

- Impact
- Fine dust/ aerosols
- High chemical splash
- **Required for corrosives, formaldehyde, materials that cause serious eye damage (see Safety Data Sheet)**

An injury that didn't happen...

“I used to think that we might have been unnecessarily and overly cautious, but now I couldn't appreciate more of its importance in this shared facility, where everyone needs to take responsibility in making sure that us and people around us are safe.

One day in April 2016, I was doing e-beam evaporation. I saw that the shape of the aluminum boat, which I used for the experiment, had deformed. So, I attempted to fix it by bending it slowly. This was when it accidentally fractured, and a shard flew right onto my safety glasses. This happened before I could respond, so if I weren't wearing safety glasses, I might have been injured.”

-Zheng

COVID-19 Community Level: Suffolk County **LOW**

- The Laboratory is in Normal Operations mode
- Face coverings not required but encouraged when traveling together in vehicles or working closely in small spaces.
- If you feel sick, stay home!

To Do List

- ❑ Students review & sign appropriate Experimental Safety Review (ESR). These safety documents describe experiments at the CFN.
- ❑ Complete online training required by ESR.
You will get a list from the training coordinator.
- ❑ CFN mentors/ staff will provide COSA/ tool training.
- ❑ Pause and ASK QUESTIONS –
 - If you don't understand a procedure,
 - If you need help with getting the right PPE or tool to do your work
 - If your experiment is not working as expected
 - If someone working nearby is doing something unsafe (“STOP”)