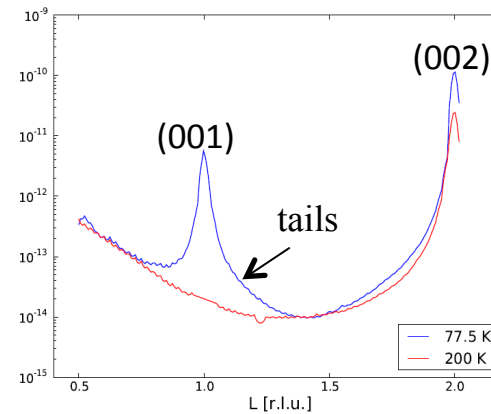
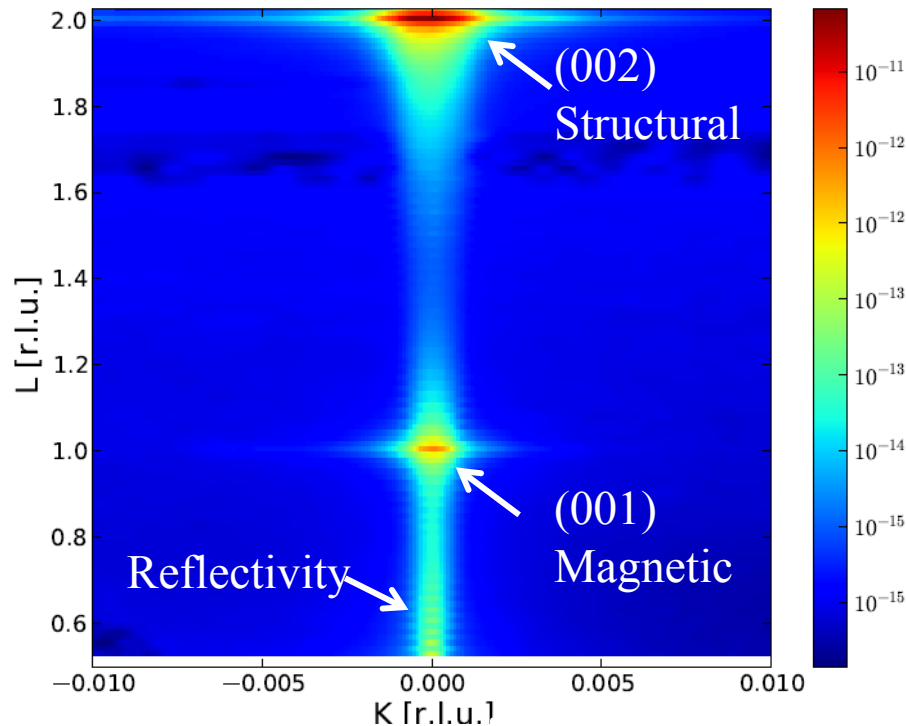


# First Results from Soft X-ray Imaging and Diffraction Chamber

Magnetic scattering has been observed in a manganite,  $\text{La}_{1.05}\text{Sr}_{1.95}\text{Mn}_2\text{O}_7$  :



The momentum dependence of the tails of the scattering provides information on the magnetic interface

This work paves the way for studies to address basic questions such as:

- How, and why, are strongly correlated systems electronically inhomogeneous?
- Is the electronic order different at a surface or interface than in the bulk? Why?

The magnetic order parameter

