

# Discovery Park

CAC Meeting

June 13, 2019

Marty Fallier, Director

Campus Development Office

[fallier@bnl.gov](mailto:fallier@bnl.gov)



**BROOKHAVEN**  
NATIONAL LABORATORY



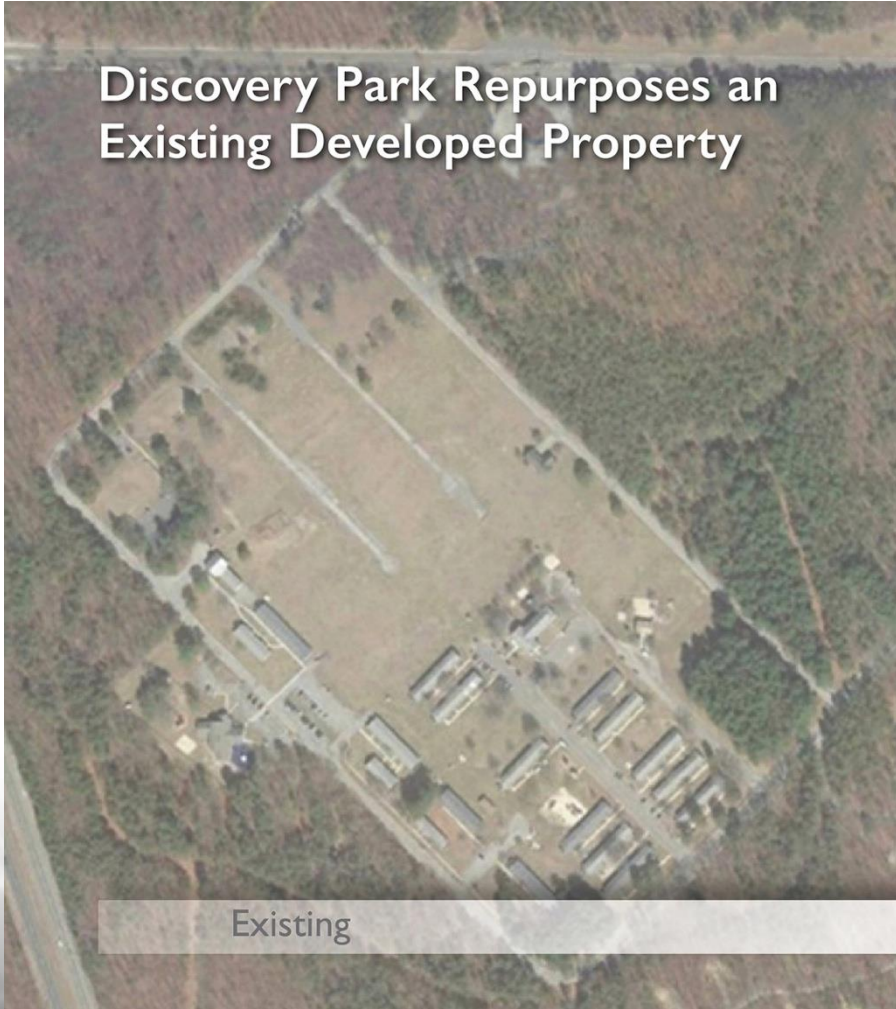


# Discovery Park

*A transformational project for Brookhaven National Laboratory  
Enhancing the User Experience, Economic Development & STEM Education*



Discovery Park Repurposes an Existing Developed Property



Existing



Proposed

# Discovery Park: Addressing Multiple Needs

## Infrastructure Renewal

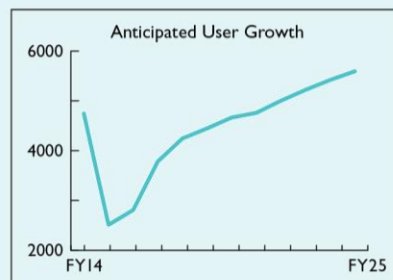
- Enables demolition of 250,000 SF of old inadequate wood buildings
- Eliminates \$34M of repair and ESH legacy deficiencies

Facility Type (Total 4.75M SF)	Adequate	Sub-standard	Inadequate
Mission Unique Facilities	21%	9%	1%
Conventional Facilities	17%	29%	23%



## User Accommodation

- Enhanced one-stop guest/user experience
- Renewed user housing and collaboration space
- Accessible conference center
- Attractive “sense of place”



## Economic Development

- Technology transfer, growth, and impact

Opportunities for  
Discovery Park Tenants

Supply Chain Relationships

“Implant Laboratories”

Joint Institutes

Technology Incubators

2012

Initial idea to repurpose land  
Created early master plan

2013

Initial public discussion at invitation of Town of Brookhaven

2014

Campus development plan and BSA Contract proposal  
Engaged GSA

2015

Became a “recognized project”  
Awarded \$1.8M NYS grant

2016

Completed Feasibility Study  
Received DOE endorsement for a Federal anchor building

2017

Received SUSC CD-0  
Created Upton Square as initial development focus

2018

SUSC funding proposed  
Planning CD-I approval

2019

SUSC funded, design underway  
Private lease development  
LIRR relocation study



# Discovery Park Master Plan

*The current vision for functional uses of Discovery Park*

## SUSC – Federal Funded Anchor Facility

- Visitor badging, training, on-boarding and housing assignment
- Offices for ~250 support staff
- Conference & collaboration space ~300

## Portal to Discovery – Private Funded

- Teaching labs & classrooms
- Conference space ~300+
- Event and interactive media space
- Potential food service & amenities

## User Housing – Private Funded

- Short term on-site residence
- Potential food & other amenities

## Technology Partners – Private Funded

- Joint Institutes
- Implant Labs
- Supply chain relationships
- Technology Incubators

## Day Care – Privately operated

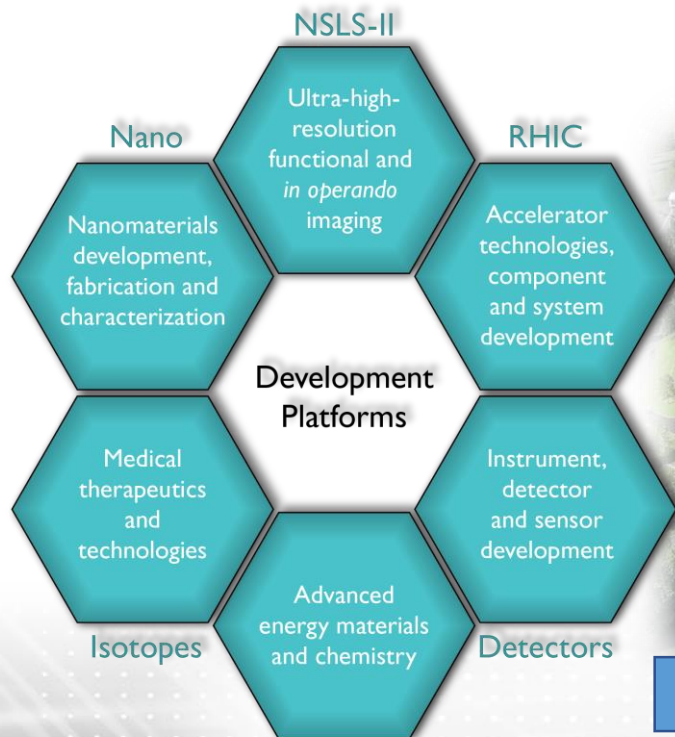


# Discovery Park Technology Partnership Development

*What are the Technology Partnership opportunities that align with the BNL mission and can lead to economic development ?*

A series of studies identified the most promising development platforms based on:

- BNL's core capabilities and research & development focus areas
- Compatibility with local and regional TBED ecosystem
- Technologies with clear line of sight to market & growth
- Potential for public private partnerships

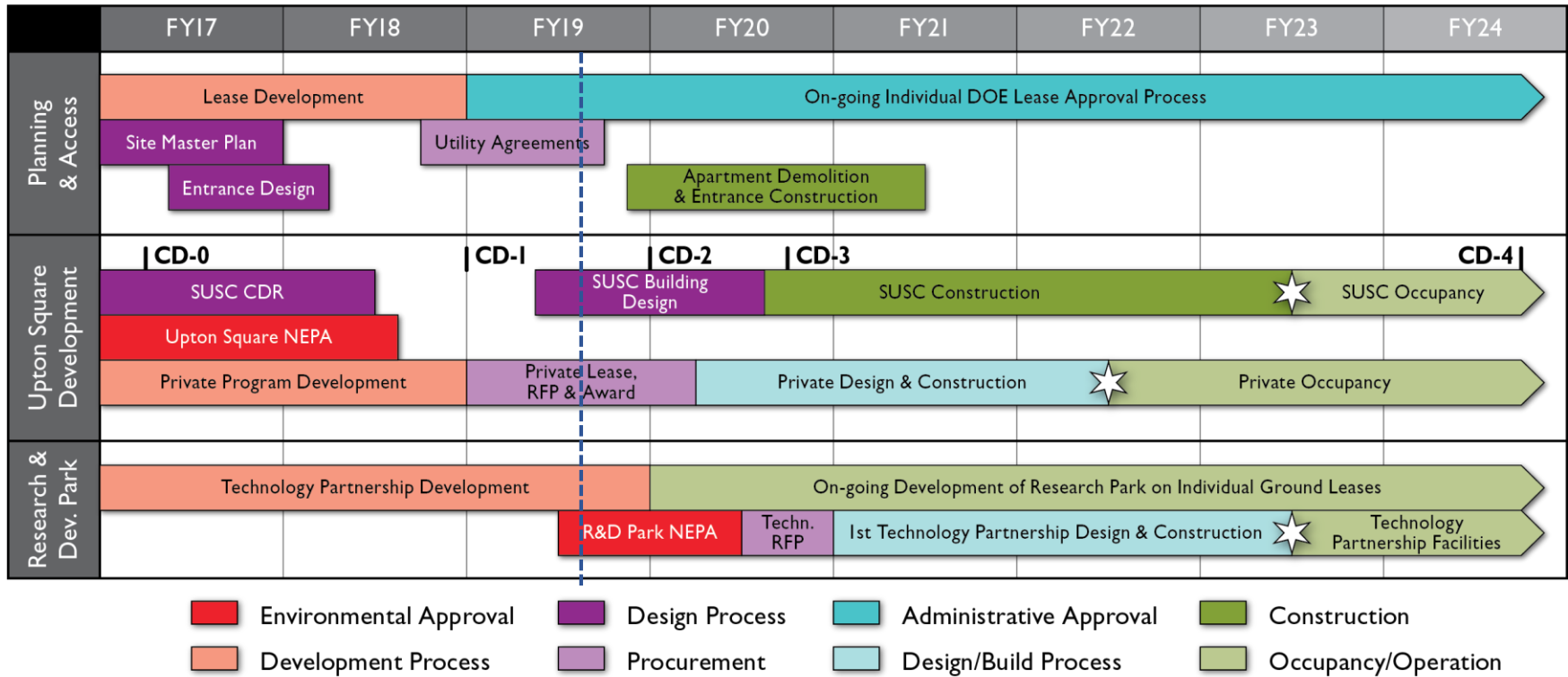


# Discovery Park envisioned



# Discovery Park Integrated Schedule

*Funding of the SUSC enables initiation of the privately funded facilities*





# Discovery Park

**Questions?**

**Contact:**

**Marty Fallier, Director,  
Campus Development Office**

631-344-3475 • 631-379-2914 (M)

[fallier@bnl.gov](mailto:fallier@bnl.gov)