



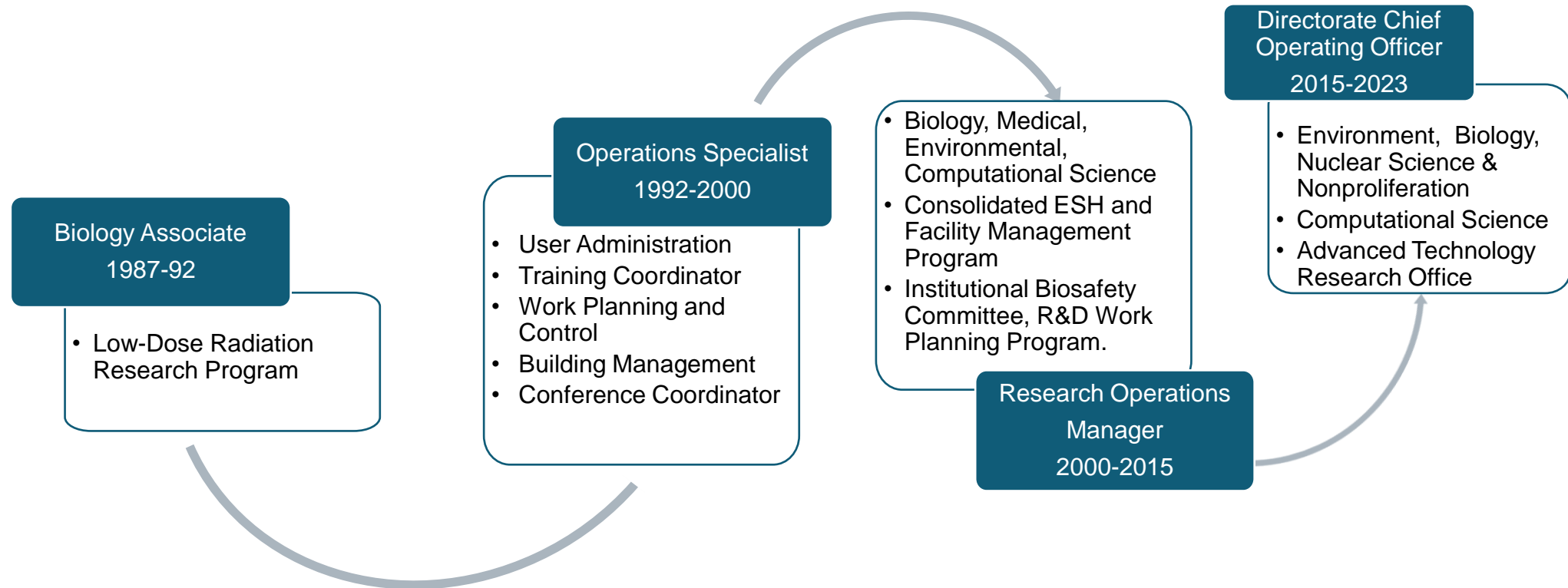
# Community Advisory Council

Ann Emrick  
Deputy Director for Operations

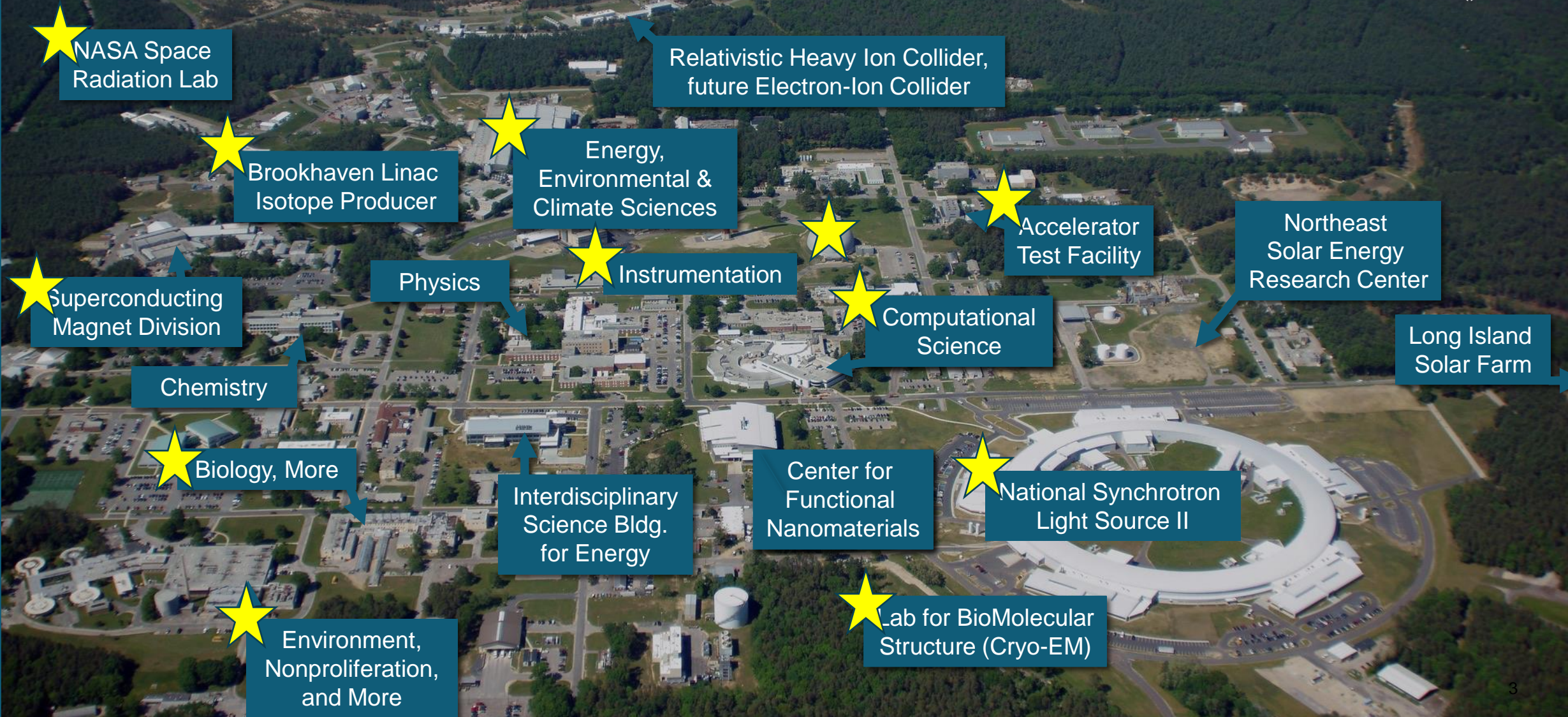
November 9, 2023



# My BNL Journey



# My Footprint on Brookhaven...



★ NASA Space Radiation Lab

Relativistic Heavy Ion Collider, future Electron-Ion Collider

★ Brookhaven Linac Isotope Producer

★ Energy, Environmental & Climate Sciences

★ Accelerator Test Facility

Northeast Solar Energy Research Center

★ Superconducting Magnet Division

Physics

★ Instrumentation

★ Computational Science

Long Island Solar Farm

Chemistry

★ Biology, More

Interdisciplinary Science Bldg. for Energy

Center for Functional Nanomaterials

★ National Synchrotron Light Source II

★ Environment, Nonproliferation, and More

★ Lab for BioMolecular Structure (Cryo-EM)

# Dedicated to BNL, the Community and our Environment

- Chaired the BNL United Way campaign
- Coordinated Summer Sundays for Biology
- Science Fair Judge
- Employee Resource Groups, Breast Cancer help forums, Habitat for Humanity, Food Drives, BERA clubs, Earth Day



# Campus Strategy Update

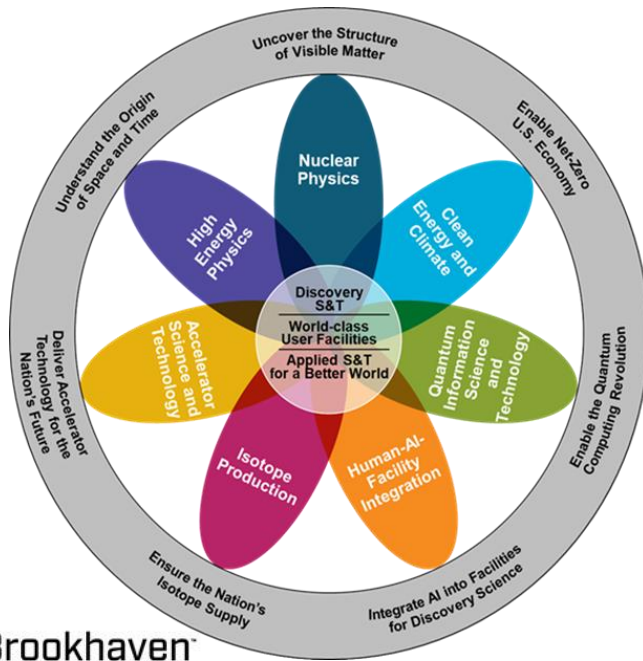
## *Enabling the Science*

# BNL Mission & Campus Strategy

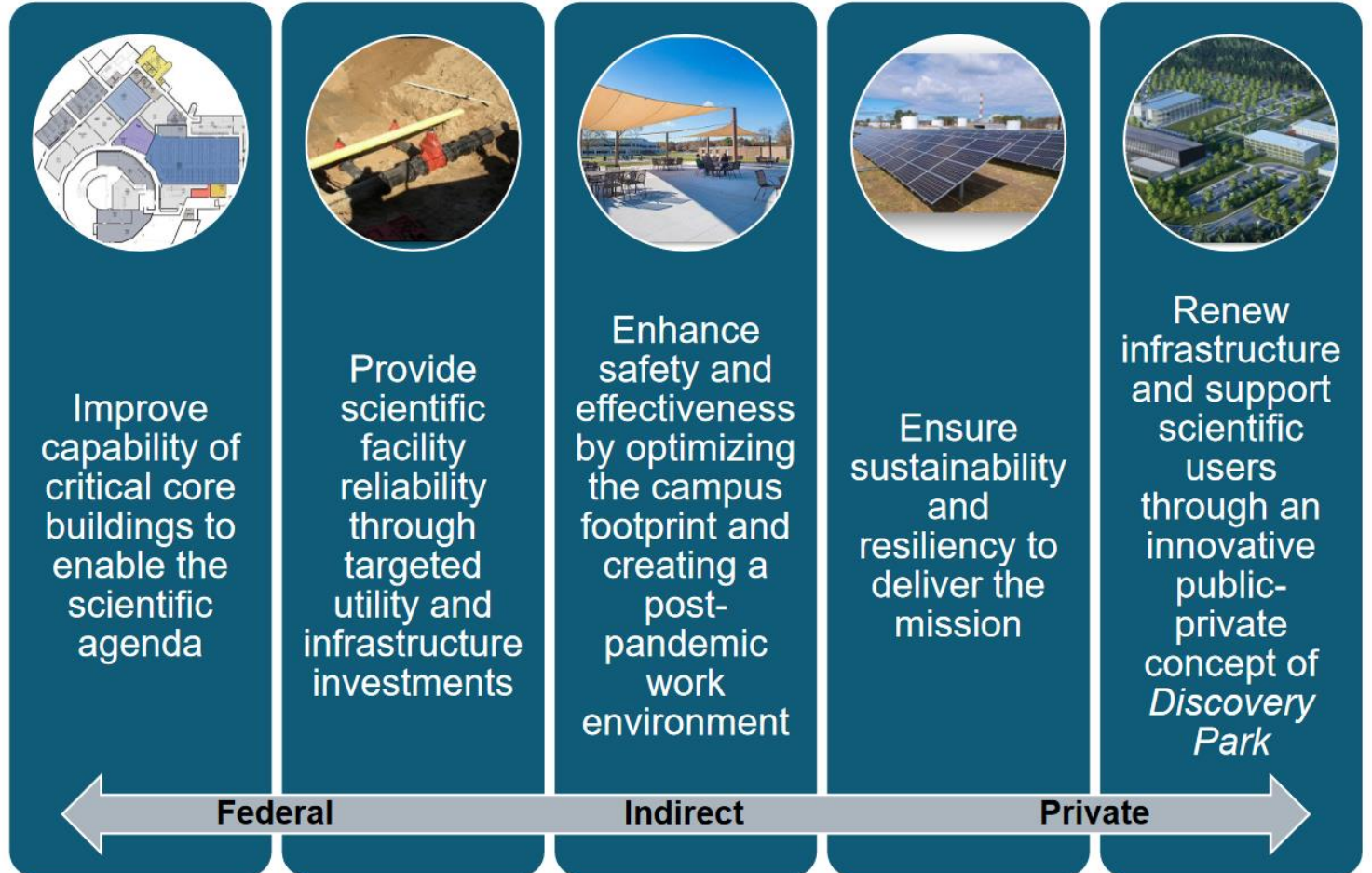
## BNL MISSION

Delivering expertise and capabilities to drive scientific breakthroughs and innovation for today and tomorrow.

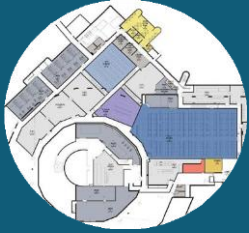
## SCIENCE INITIATIVES



## Strategy Elements



# Investing in our Core Infrastructure to Support Isotope Production Capability



Improve capability of critical core buildings to enable the scientific agenda

- We support DOE's mission to meet the nation's demand for Actinium 225
  - Upgrade All Inclusive Production (AP) hot cells
  - Repurpose an existing facility (B870) for hot cell processing
    - *Clinical Alpha Radionuclide Producer (CARP) Project*

# Critical Utility Rehabilitation Project (CURP)

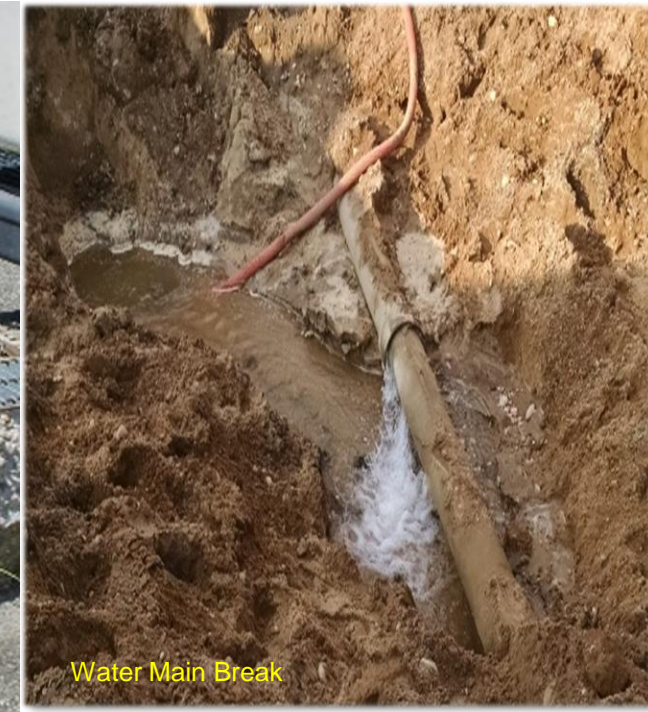


Provide scientific facility reliability through targeted utility and infrastructure investments

Critical to the success and mission capability of BNL's research facilities is an efficient and reliable utility infrastructure

The CURP Project will address the highest priority utilities which suffer from decreased reliability, lack of redundancy and limitations in capacity.





## CURP Scope

Revitalize and selectively upgrade” all five main utility systems.

- Chilled Water
- Steam
- Potable Water
- Electrical distribution
- Sanitary Sewer System

# Quality of Life Improvement Initiatives

*Creation of workspaces and work practices in a post-pandemic environment*



Enhance safety and effectiveness by optimizing the campus footprint and creating a post-pandemic work environment

- Focus on improving staff morale through the creation of collaborative spaces
- Hybrid work-spaces will be enduring
- Re-evaluating food service model
- Re-opened on-site Child Development Center
- Enhance the work environment, social gatherings and employee resource group activities



Child Development Center



Brookhaven Town Square



Volleyball Court



ADA Access Gender Neutral Restroom

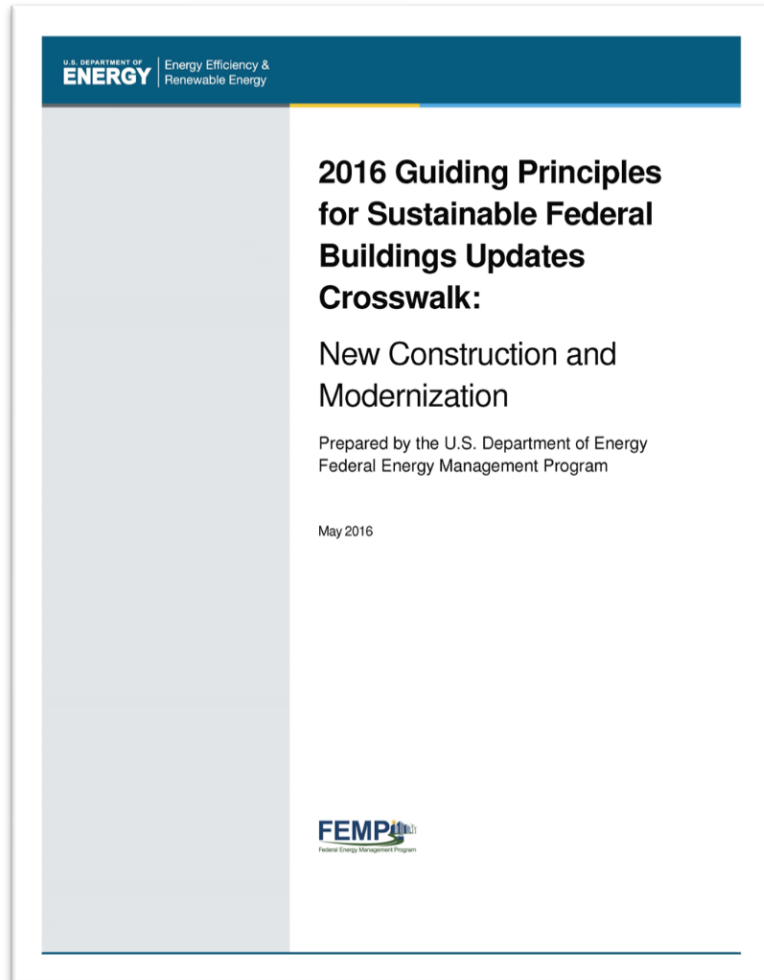
# Ensure Sustainability and Resiliency



Ensure sustainability and resiliency to deliver the mission

- Recently added EV charging stations
- Submitted proposals to explore funding for:
  - Solar panels parking lots
  - On-Site Carbon Free Electricity
  - Net Zero Dormitory
- New construction meets DOE's High Performance and Sustainability Guiding Principles and are designed for climate resiliency.

# Sustainability Design Intent



## Department of Energy Guiding Principles

- Optimize Energy Performance
- Protect and Conserve Water
- Enhance Indoor Environmental Quality
- Reduce the Environmental Impact of Materials
- Assess and Consider Climate Change Risks

# Renew Infrastructure and Support Discovery Park Science and User Support Center (SUSC)



Renew infrastructure and support scientific users at Discovery Park

SUSC will serve as a gateway to the community which includes:

- More accessible meeting rooms
- Externally facing departments gathered in one spot
- Streamlined processing for visitors



**Project Cost:** \$86.2M  
**Construction Contract:** \$62M  
**Sustainable Design**

# SUSC Highlights



# Summary

- We have a focused campus strategy that provides the infrastructure to enable the Lab's research mission.
- Our strategy is aspirational, but also transformational.
- We are all very excited about the future!



# Questions?