

Dismantlement & Disposal of High Flux Beam Reactor Building 705 (The Stack)

Matthew Creamer
Project Manager

Brookhaven National Laboratory
Community Advisory Council
April 08, 2021



US Army Corps
of Engineers®



with Teaming Partners
Cabrera Services, Inc.
ICC Commonwealth
GEI



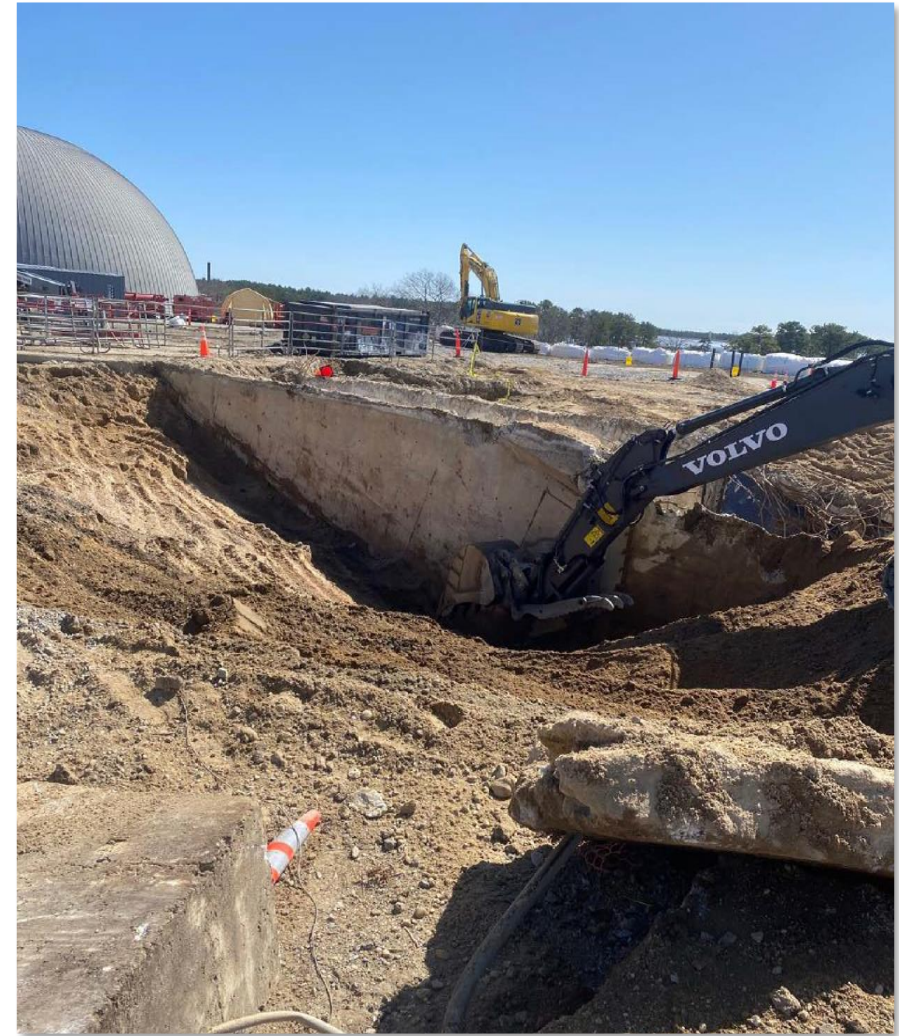
BROOKHAVEN
NATIONAL LABORATORY



Dismantlement & Disposal of High Flux Beam Reactor Building 705 (The Stack)



View of the exposed silencer looking west



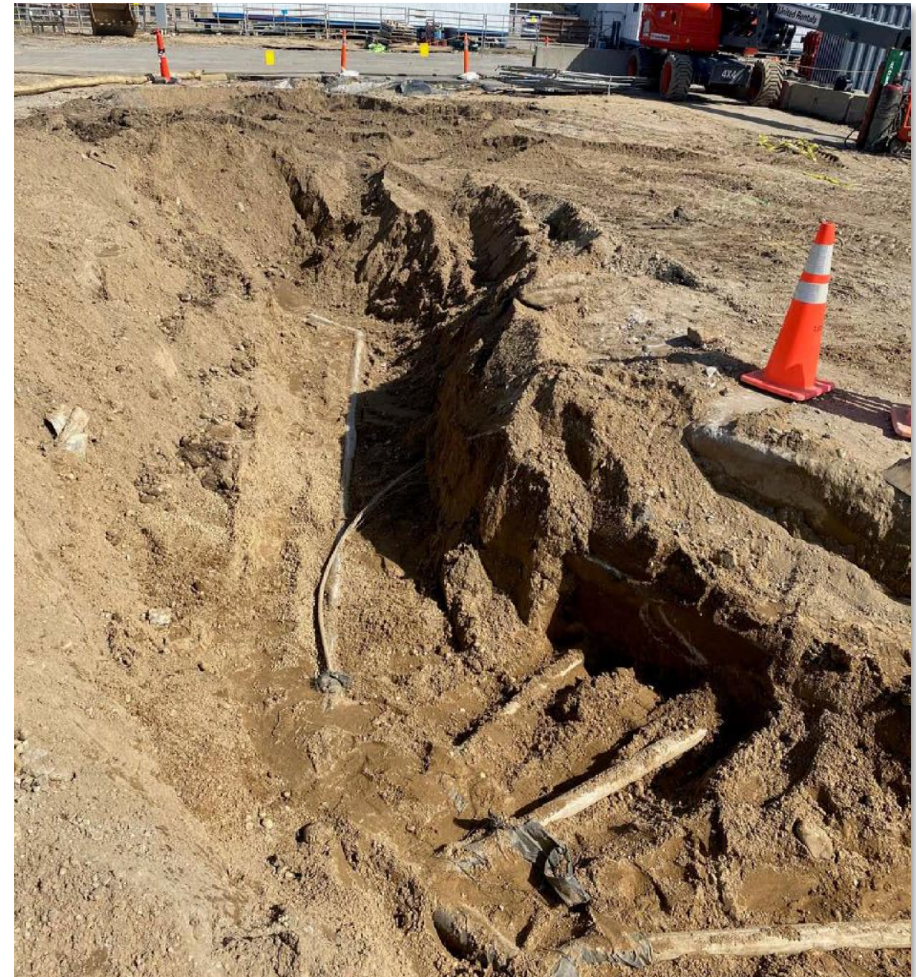
Excavation of soils adjoining the silencer to access outer silencer walls



Dismantlement & Disposal of High Flux Beam Reactor Building 705 (The Stack)



Loaded and screened 10 cubic yard supersack being removed and staged for transport to the railyard



Three stack drainpipes entering the pedestal and the drainpipe leading to the former stack drain tank



Dismantlement & Disposal of High Flux Beam Reactor Building 705 (The Stack)



View of the exposed silencer looking west from the pedestal



Dismantlement & Disposal of High Flux Beam Reactor Building 705 (The Stack)



View looking east of the exposed silencer and grading of surrounding soil to allow for demolition



Dismantlement & Disposal of High Flux Beam Reactor Building 705 (The Stack)



View of silencer demolition from the north



View of the silencer demolition process looking from the south



Dismantlement & Disposal of High Flux Beam Reactor Building 705 (The Stack)



Initial rad screening of stack drain tank overburden soil



View looking east at the installed shoring box in the stack drain tank excavation



Dismantlement & Disposal of High Flux Beam Reactor Building 705 (The Stack)



View of silencer excavation looking east. Silencer footprint is within the blue flags.



Dismantlement & Disposal of High Flux Beam Reactor Building 705 (The Stack)



10 cubic yard soil supersack being weighed and loaded for transport to the rail yard



Intermodal containers and soil sack staging area at the railyard in preparation for transport