

BGRR Projects & ESD



Diane Rocco
Director, Environmental Restoration Projects

January 2012

Explanation of Significant Difference - Draft

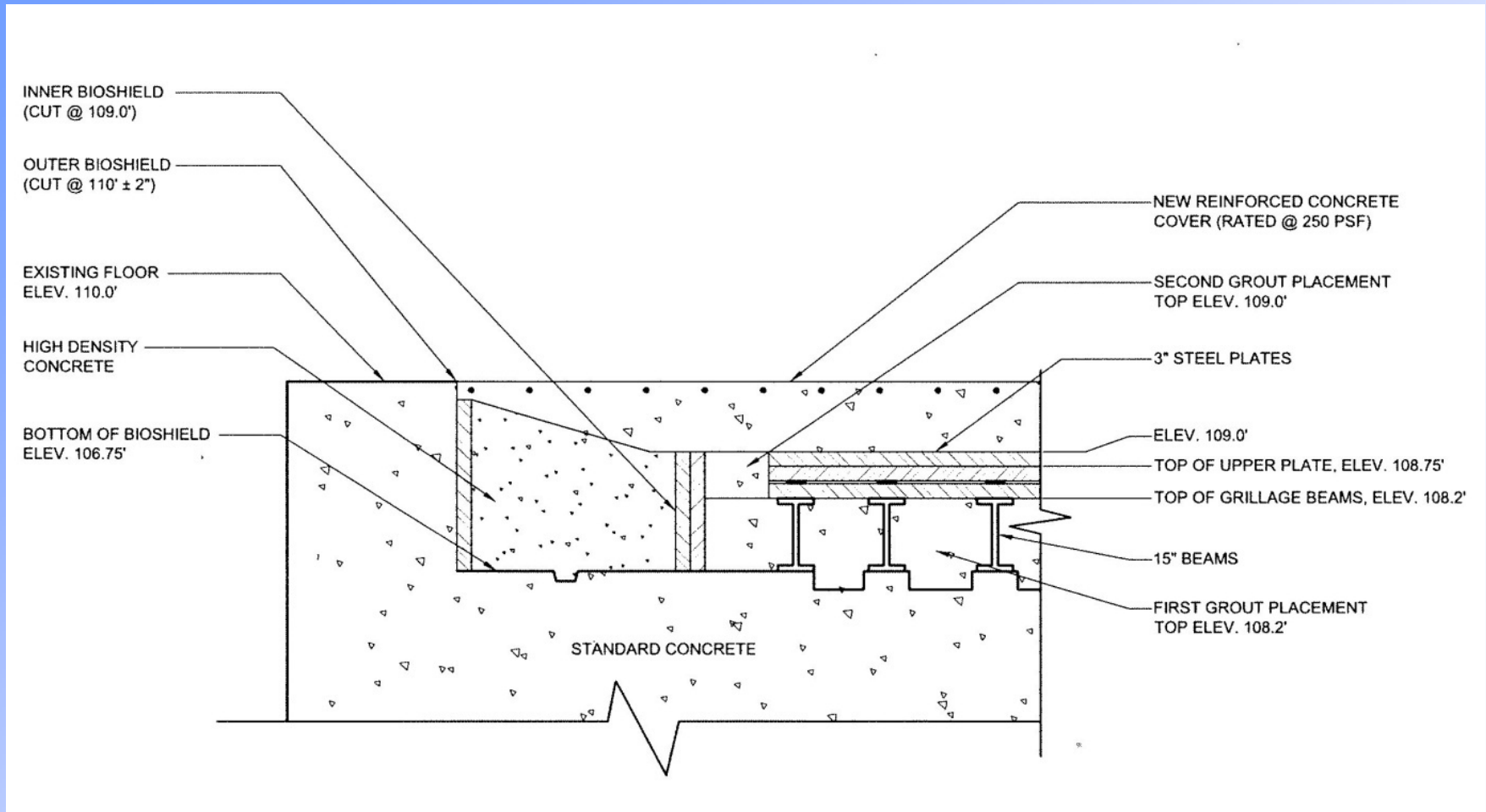
– Record of Decision

- CERCLA process allows changes to the ROD
- Explanation of Significant Differences is implementing document
- No suspension of work required

– BGRR Bioshield Wall Removal

- Removal of last three feet below floor level very difficult
- Dose consequence and significant schedule impact
- Less than 0.5% of activity in wall remains
- No change to ROD commitment for Activity Removal

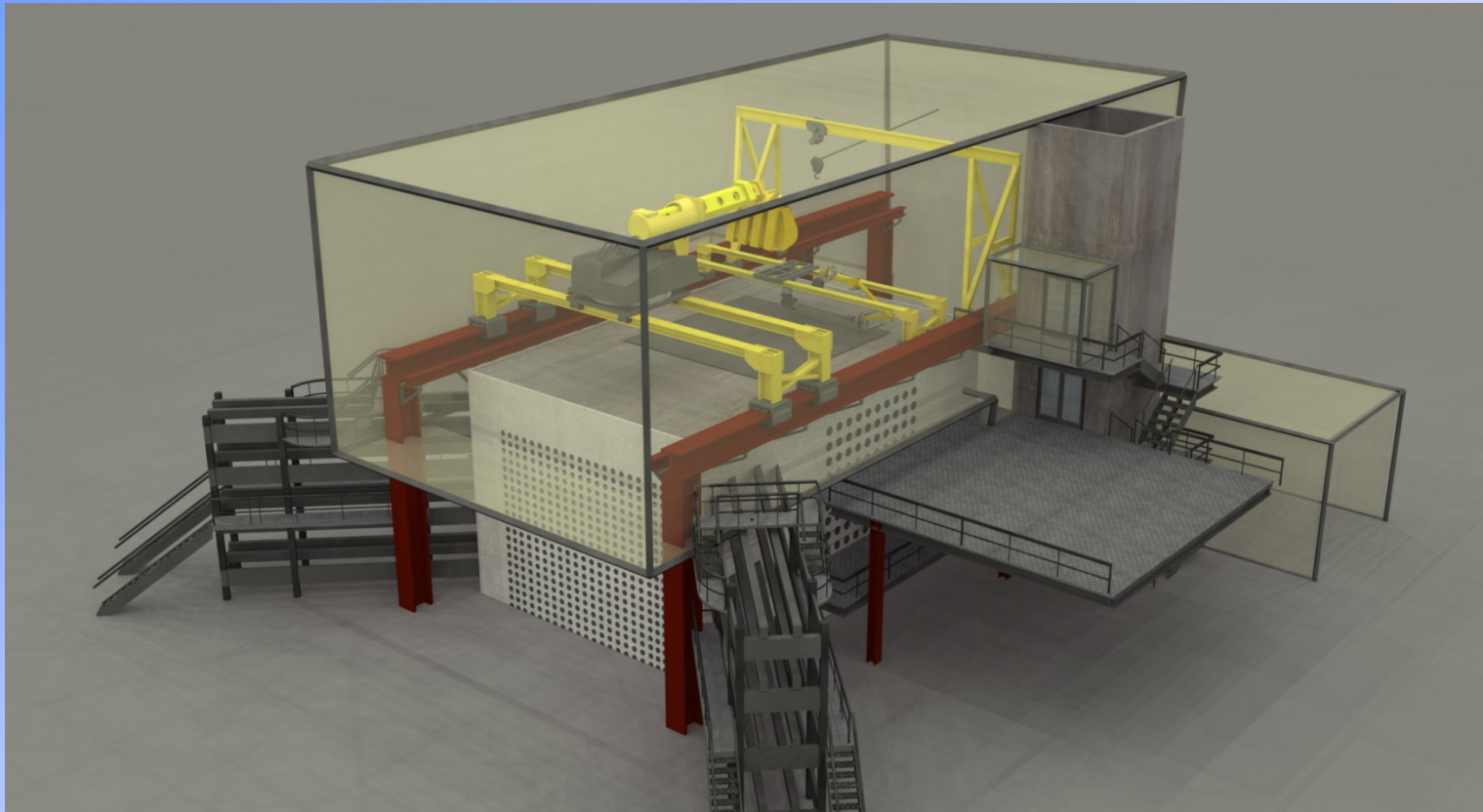
Explanation of Significant Difference - Draft



Explanation of Significant Difference - Draft

- Remaining material protected within building and under concrete floor pour.
- Isolated from any contact with groundwater.
- The maximum dose in the area currently < 0.05 mR/hr
- Floor pour was pulled forward due to suspension of aerial work (due to accident)
- State and EPA were consulted and agreeable
- Draft ESD is currently with them for concurrence

BGRR Bioshield Demolition



- Bioshield Enclosure: 55' Long by 37'-6" Wide by 33'-7" High
- Bioshield Wall construction: 6" interior steel, 4'-3" concrete, 3" ext. steel

Introducing the New Holland Excavator



Biological Shield Demolition – 10/2



Biological Shield Demolition – 10/10



Biological Shield Demolition – 10/28



Biological Shield Demolition – 11/4



Biological Shield Demolition – 12/7



Biological Shield Floor Pour – 12/27



BGRR Schedule

- Aerial work suspended after accident
- Non-aerial work moving forward
 - Concrete removal complete,
 - Inner steel removal is complete,
 - Gradall and New Holland excavators removed from the building
 - First pour of concrete complete, dose consistent with target goals.
- Process to resume aerial work after accident underway
 - Investigation Report issued final 12/22,
 - Corrective Action Plan is in preparation.
 - Resumption assumed to be next week

Farewell to the New Holland



What's Next?

- Resume aerial work
- Cut out the South Wall center section
- Remove the Tent around the bioshield area
- Bring down the crane and supporting steel framework
- Support the uncontaminated and unactivated East Balconies
- Cut down the rest of the exterior steel
- Remove at least five feet of the East Balconies
- Pour a final concrete floor over the Bioshield footprint