

Ecological Recovery Peconic River, Post Cleanup

Tim Green

Environmental Protection Division

April 9, 2015

BROOKHAVEN
NATIONAL LABORATORY

a passion for discovery



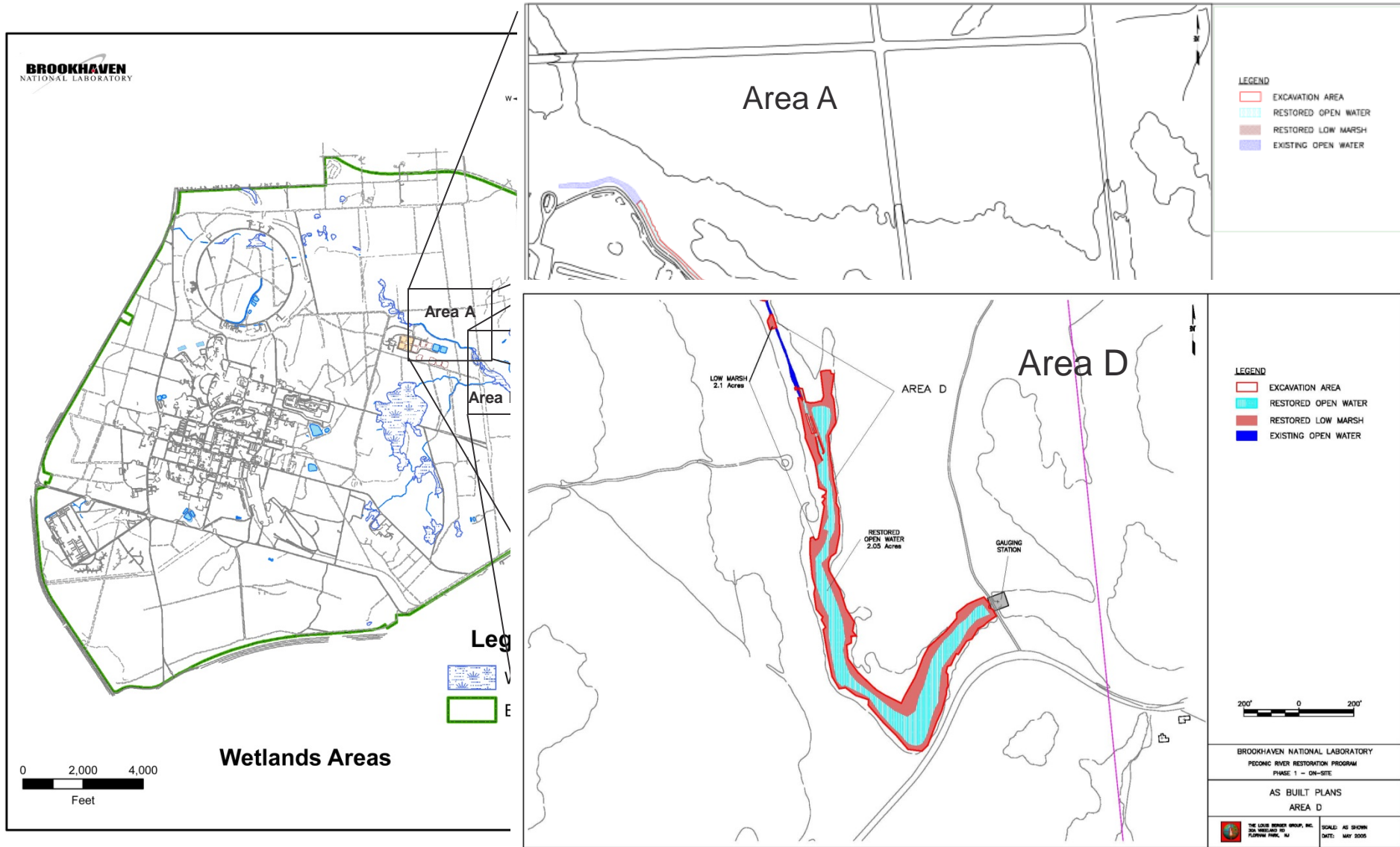
Agenda

- Cleanup
- Extent of cleanup maps
- Post cleanup monitoring of vegetation
- Photo points
 - River
 - Temporary haul roads
- Supplemental cleanup areas

Peconic River Cleanup

- 2004-2005 - ~20 acres cleaned up and restored
- 2004 on site – Sewage Treatment Plant outfall to North Street
- 2005 off site
 - Area D
 - Area E
 - Area P - Schultz Rd Area
 - Manor Rd Area
- 2010-2011 - ~0.4 acre supplemental cleanup

Extent of cleanup maps



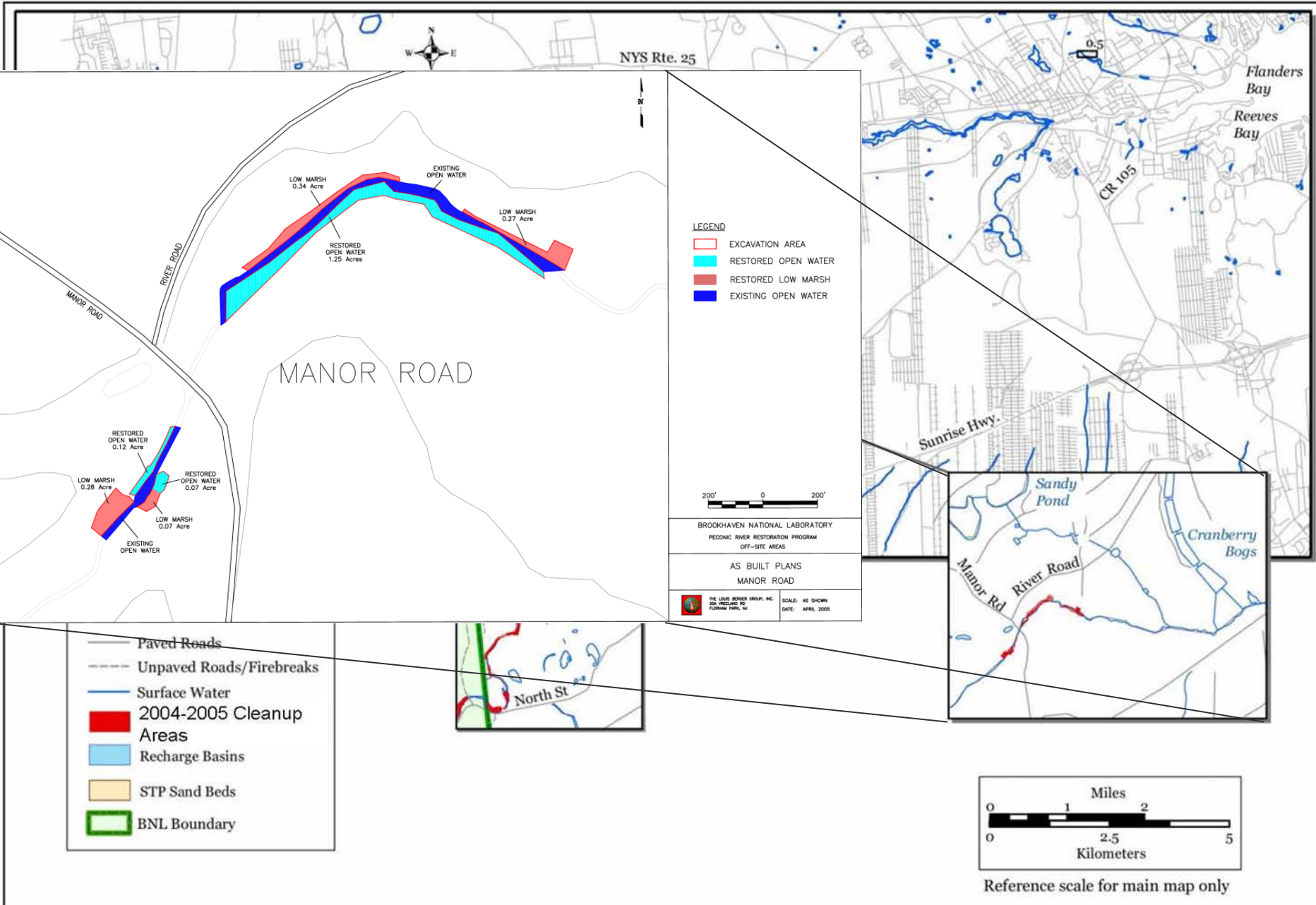
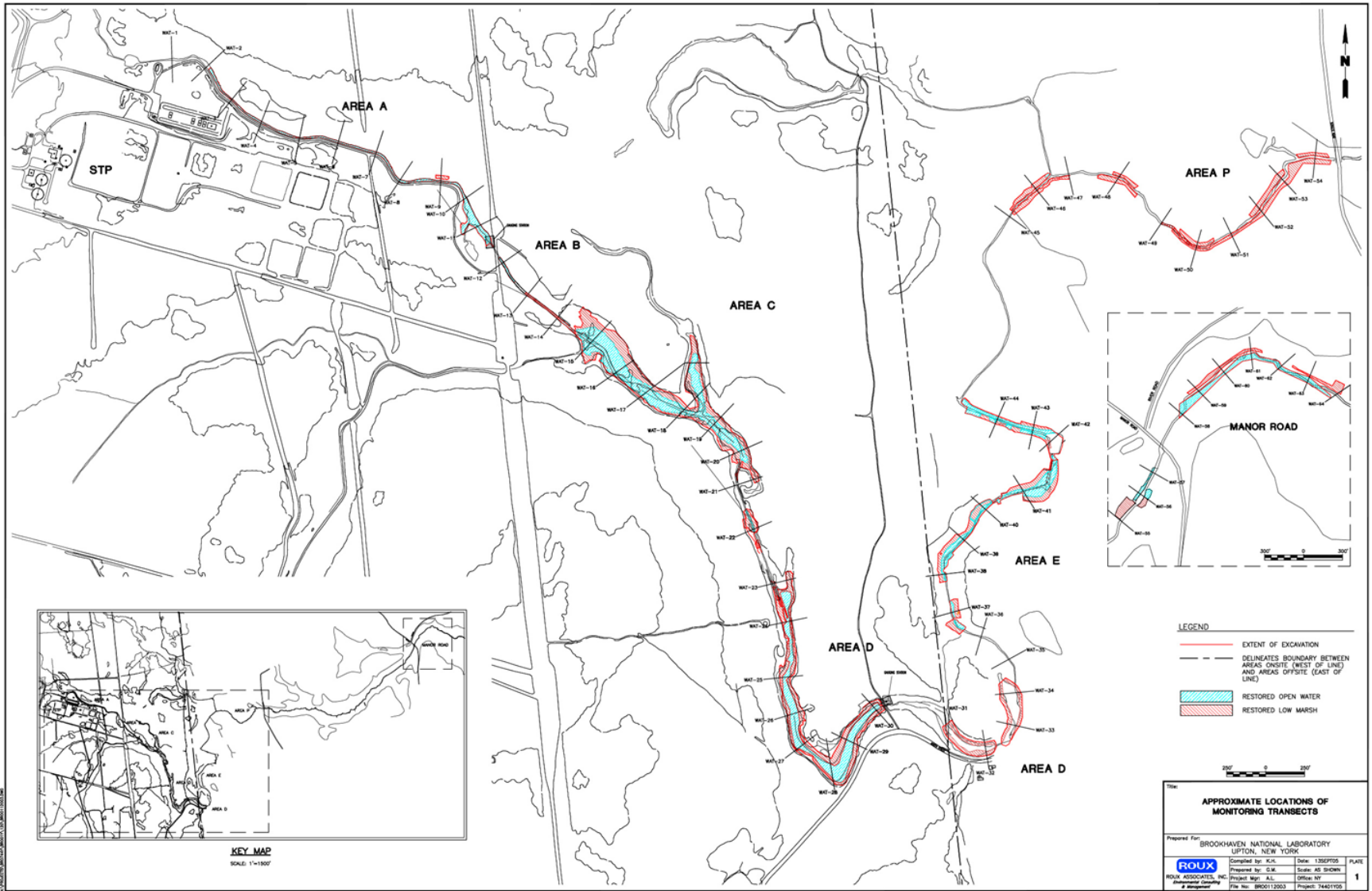
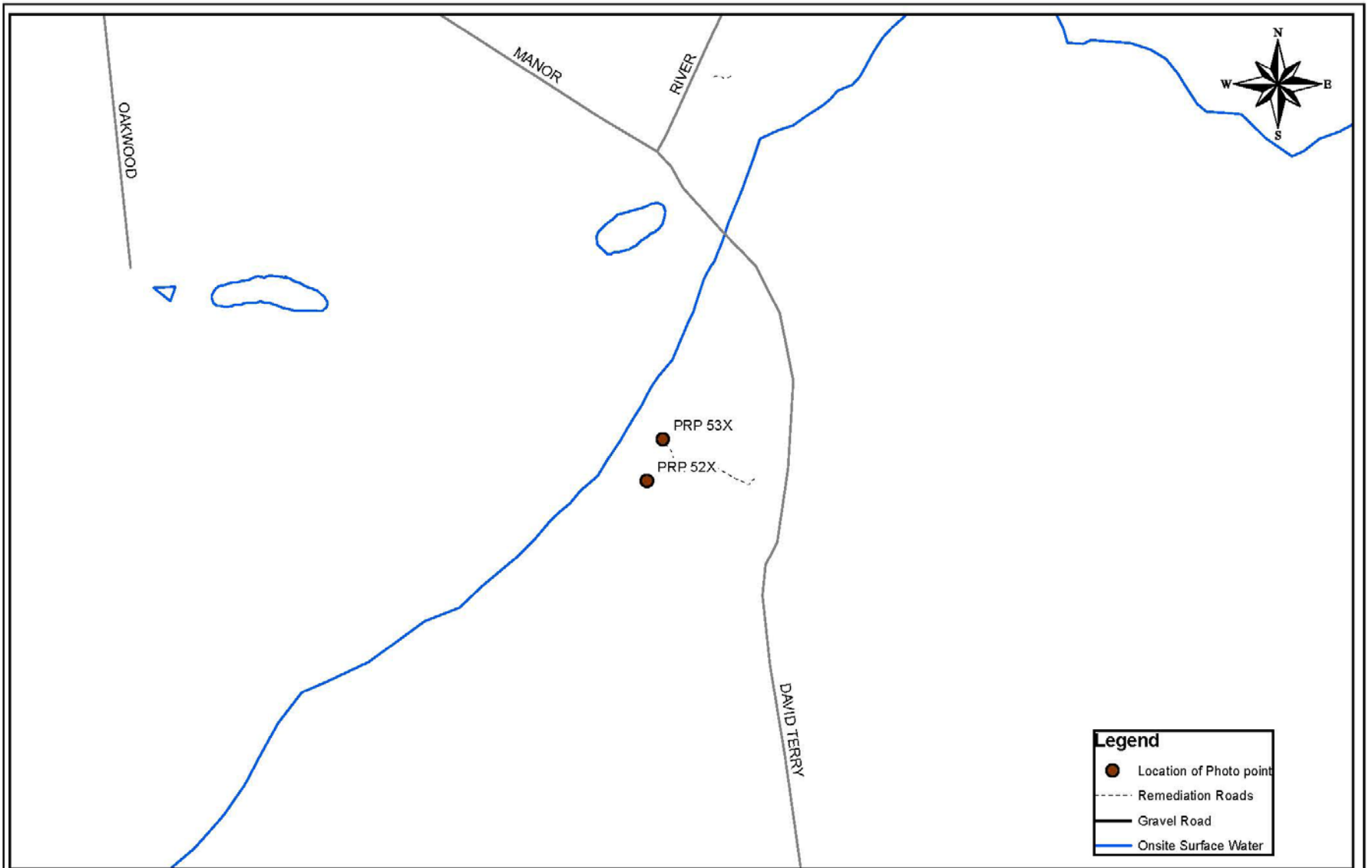


Figure 1-1. The Peconic River. The sections of the river that were remediated are indicated in the two call-out boxes, These two sections are shown in detail in Figures 1-2 and 1-3.

Restoration Monitoring





Legend

- Location of Photo point
- Remediation Roads
- Gravel Road
- Onsite Surface Water



Photo Point Locations For
Peconic River Remediation 2004

Peconic Wetland Revegetation Success

- **Following 2004/2005 Original Cleanup**
 - NYSDEC wetland permit requirements for revegetation and invasive species control were met in 2006 and approved in 2007
 - Federal invasive species monitoring and control requirements were met in 2008

- **Following 2010/2011 Supplemental Cleanup of 3 Areas**
 - NYSDEC wetland permit requirements for revegetation and invasive species control were met in 2012 and approved in 2013
 - Federal invasive species monitoring and control requirements were met in 2014.

CAC Tour Nov 2009





2004



2008



2010

UNDEVELOPED LOW MARSH
CONTAINING OPEN WATER



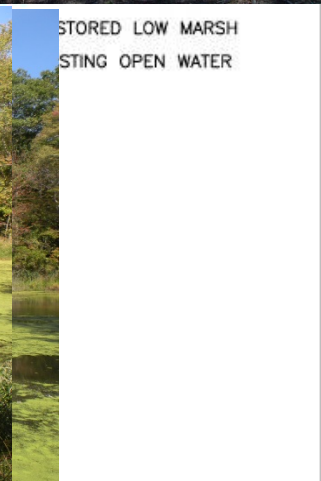
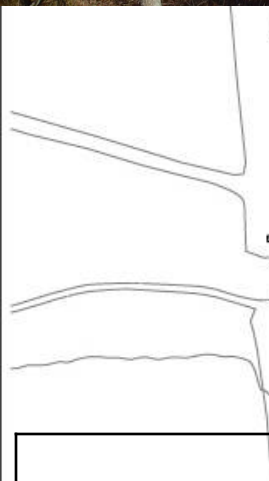
NOV 25 2003



2004



2006





RESTORED LOW MARSH
EXISTING OPEN WATER

Area D (on site)

% non-vegetated
33
6
28
NA





2005



2006



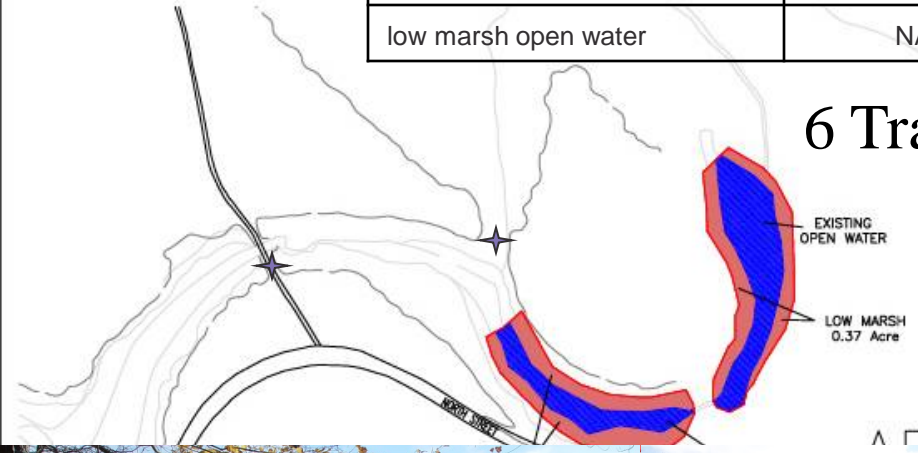
2010

Open Water	33	67
low marsh open water	NA	NA

LEGEND

- EXCAVATION AREA
- RESTORED OPEN WATER
- RESTORED LOW MARSH
- EXISTING OPEN WATER

6 Transects



2005



2006



2010



2005



2006



2010



2005



2006



2010



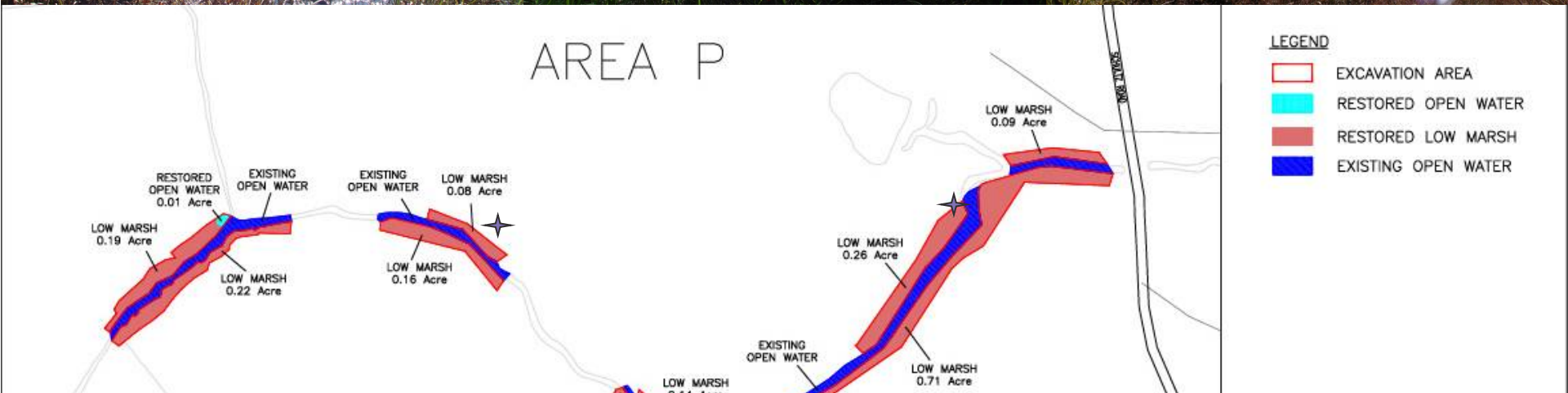
2005



2006



2010





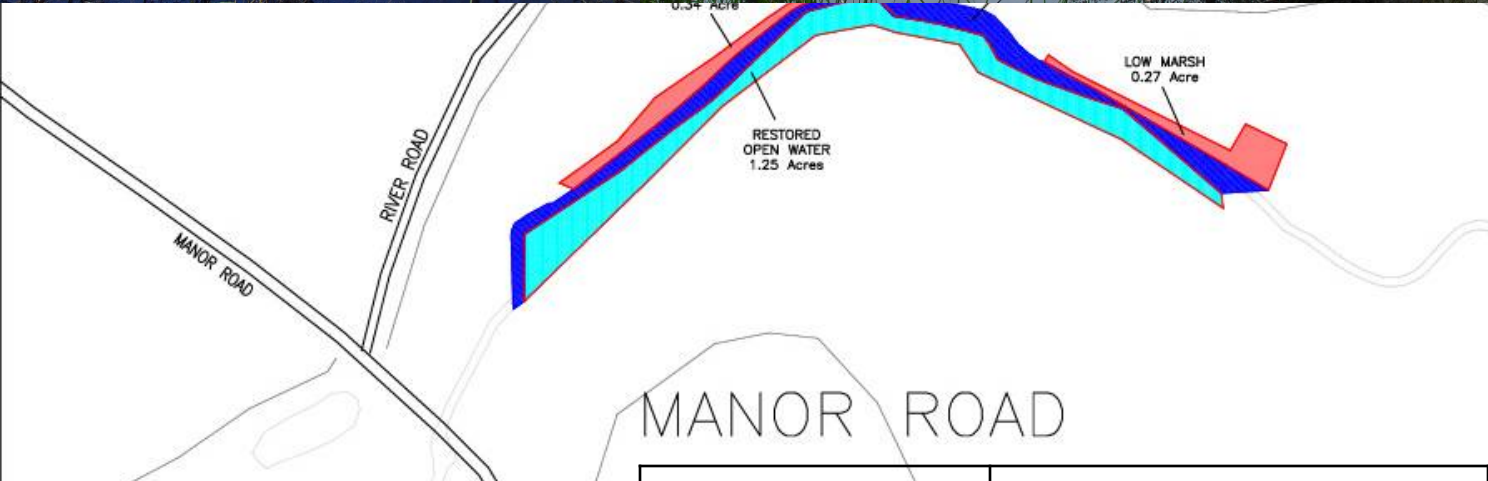
2005



2006



2010



2005



2006



2010



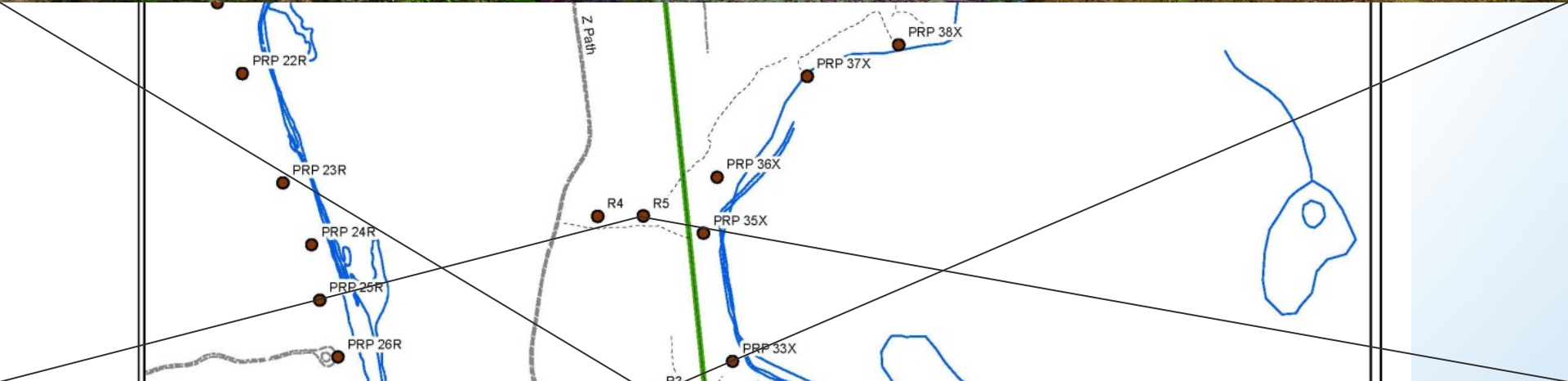
2006



2007



2010



2006



2007



2010

Supplemental Cleanup PR-WC-06



12/2010 looking downstream
Area 6 during cleanup



7/2011 transplanting looking
downstream Area 6



6/2014 Area 6 area looking downstream
(panoramic)

Supplemental Cleanup Sediment Trap



9/2009 before removal



1/2011 during removal



6/2014 former Sed Trap
area looking downstream
(panoramic)

Supplemental Cleanup PR-SS-15



9/2009 Area 15 looking upstream



1/2011 well points for dewatering just prior to excavation looking upstream



8/2014 Area 15 looking upstream (panoramic)



2011



Sept 2011



08/05/2013



2011



Sept 2011



2013

Summary

- Initial Cleanup – 2004 and 2005
 - ~20 acres
 - NYSDEC Permit requirements met and approved by 2007
 - Federal vegetation monitoring requirements met 2008
- Supplemental Cleanup – Winter 2010/2011
 - ~0.4 acres
 - NYSDEC Permit requirements met and approved by 2013
 - Federal vegetation monitoring requirements met 2014

Questions?

