



Ridge-Manorville-  
Calverton  
Community Wildfire  
Protection Plan  
(CWPP)



# Meeting Format

1. What is a Community Wildfire Protection Plan (CWPP)?
  - Collaboration & Roles
  - Steps in Process
  - Timeline
  - Benefits
2. Community Assessments
3. Draft Risk Assessment
4. Community survey
5. Community Values at Risk
6. Wrap-up and Open Feedback Session

# What a CWPP is...

- A mechanism for communities to address their wildfire risk.
- Plan to reduce threats to life and property.
- Came from Healthy Forest Restoration Act (2003).
- Community-driven process.
- Sets priorities.
- Makes recommendations for action.
- Required for future funding of mitigation treatments





# What a CWPP is not...

- Does not mandate any activity on private or public land.
- Only plans and recommends.
- Does not guarantee protection from wildfire.





# Partner Roles in Developing the CWPP

## Community:

Sets direction for plan and identifies priorities



## Agencies:

Provide technical support



# CWPP Basic Criteria

*as identified in HFRA*

- **Collaboration**
- **Prioritized Fuel Reduction**
- **Treatment of Structural Ignitability**





# Why do we need a CWPP?

- The potential for loss from wildfire is great in these communities.
- We have a lot to protect.....





# How will a CWPP help?

- Will identify areas with the greatest risk of wildfire.
- Develop recommendations to reduce fuel hazards.
- Helps to prioritize treatments and develop Action Plan for projects.
- It facilitates public input on the use of federal \$.
- Increases the number of funding sources available to communities for fire mitigation.





# STEPS IN THE CWPP PROCESS

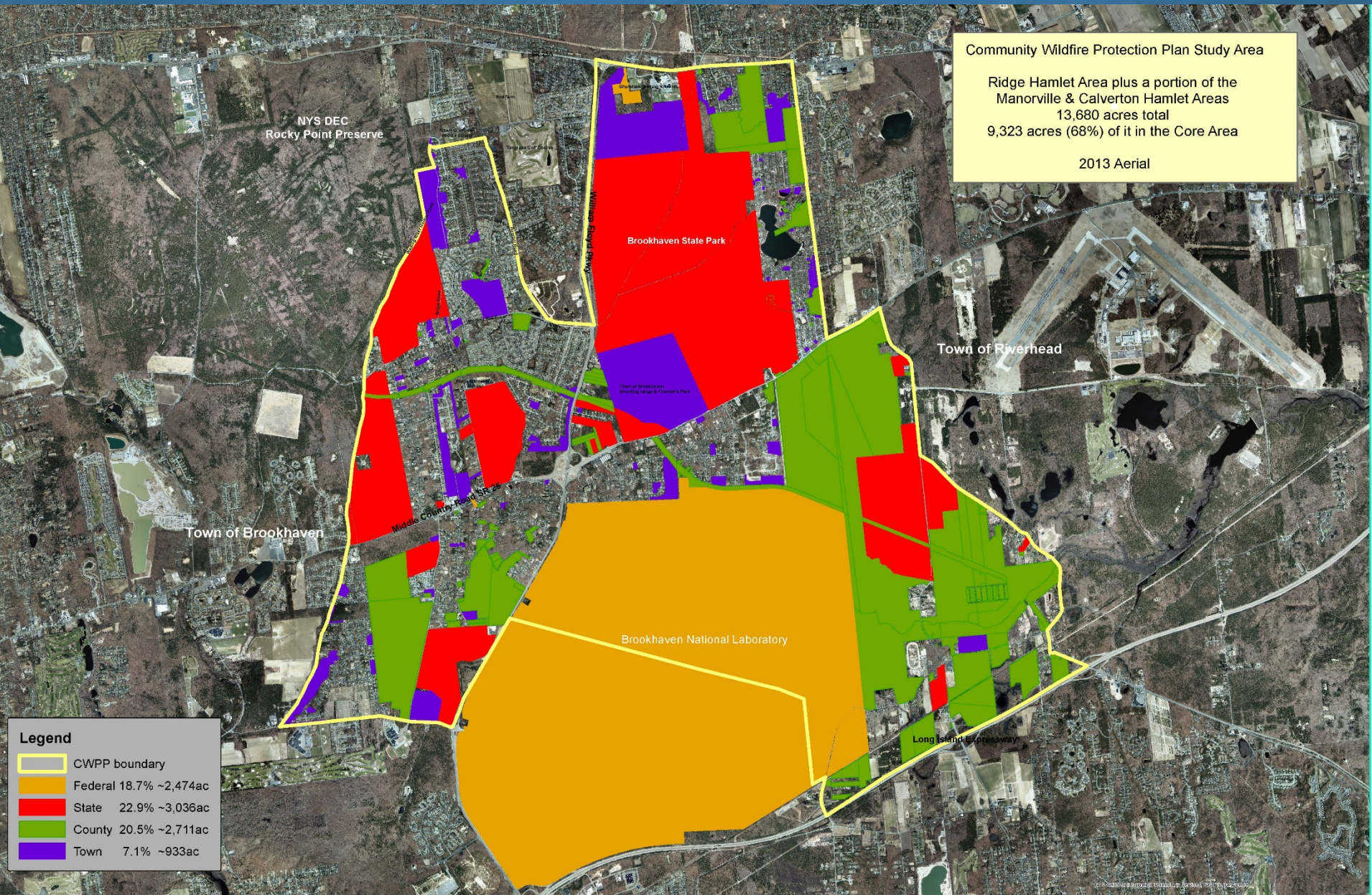
- ✓ Step One: **Convene Core Team**
- ✓ Step Two: **Involve Federal Agencies**
- ✓ Step Three: **Engage Stakeholders**
- ✓ Step Four: **Establish a Community Base Map**
- ✓ Step Five: **Develop Community Risk Assessment**
- ✓ Step Six: **Establish Community Priorities and Recommendations**
- ✓ Step Seven: **Develop an Action Plan and Assessment Strategy**
- ✓ Step Eight: **Finalize CWPP**



Community Wildfire Protection Plan Study Area

Ridge Hamlet Area plus a portion of the  
Manorville & Calverton Hamlet Areas  
13,680 acres total  
9,323 acres (68%) of it in the Core Area

2013 Aerial



**Legend**

- CWPP boundary
- Federal 18.7% ~2,474ac
- State 22.9% ~3,036ac
- County 20.5% ~2,711ac
- Town 7.1% ~933ac



# Hazard and Risk Assessment

## NATURAL ENVIRONMENT

- Weather
- Topography
- Fire behavior
- Fire History
- Habitat types
- Sensitive species
- Open Spaces

## BUILT ENVIRONMENT

- Residential areas
- Recreational facilities
- Infrastructure
- Transportation
- WUI

## EMERGENCY RESPONSE ENVIRONMENT

- Operations
- Station locations
- Apparatus
- Training and certification
- Water supply

## SOCIO-POLITICAL ENVIRONMENT

- Codes- ordinances
- Evacuation- recovery
- Community services
- Community outreach



# Hazard and Risk Assessment

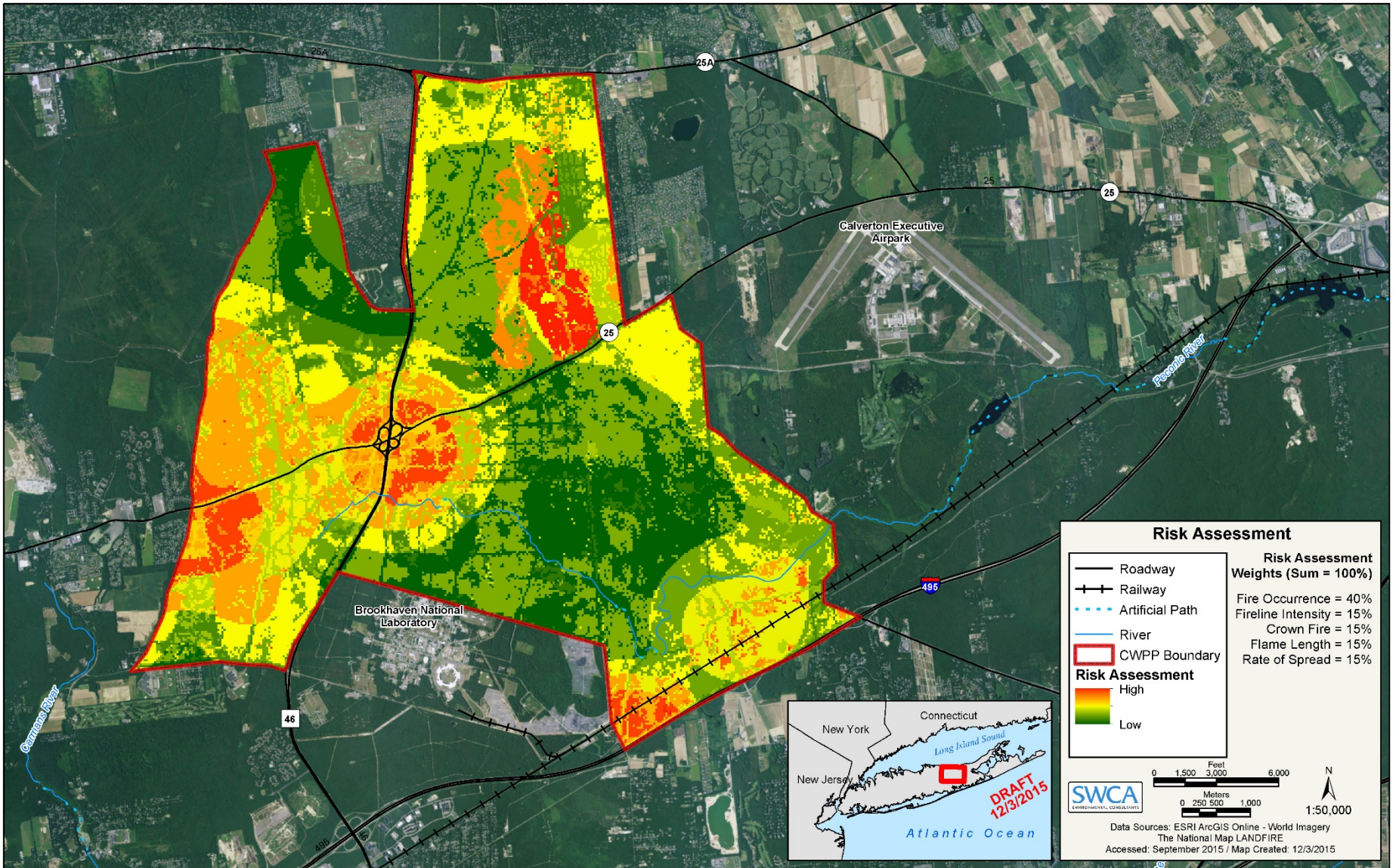
## ➤ Negative:

- Adjacency to public open -ignition potential.
- Insufficient defensible space.
- Building construction- wood decks and wood fences contacting wooded vegetation.
- History of high fire occurrence.
- Dense forest conditions.

## ➤ Positive:

- Proximity to emergency responders.
- Well maintained roads and good access.
- Minimal slope/topographic influences.
- Good water supply.
- Irrigated lawns and landscaping.







# Community Survey

- Just under 50% of respondents felt their home is **at high risk of wildfire** .
- Majority of respondents felt that **fuel on neighboring property and their own property** puts their home at risk.
- 40% of respondents felt their community was just **moderately prepared for wildfire**.
- Respondents felt preparedness could be improved most through **clean-up of live and dead vegetation**.
- **Time, financial burden and restrictions and prohibitions on vegetation clearance** ranked highest as challenges for making homes fire safe.
- Respondents would like funding to be directed at **green waste disposal, fire education, home hazard assessments, and fuel treatments** on public and private lands.



# Community Values at Risk

- Natural
- Socioeconomic
- Cultural





# FUTURE STEPS IN THE CWPP PROCESS

- ✓ Step One: **Convene Core Team**
- ✓ Step Two: **Involve Federal Agencies**
- ✓ Step Three: **Engage Stakeholders**
- ✓ Step Four: **Establish a Community Base Map**
- ✓ Step Five: **Develop Community Risk Assessment**
- ✓ Step Six: **Establish Community Priorities and Recommendations**
- ✓ Step Seven: **Develop an Action Plan and Assessment Strategy**
- ✓ Step Eight: **Finalize CWPP**