

# HFBR and BGRR Decommissioning Projects

**Chuck Armitage**  
**Director, Environmental Restoration Projects**

**Community Advisory Council**  
**March 12, 2009**



# HFBR Update

- Control rod blades
- Beam plugs
- Next steps



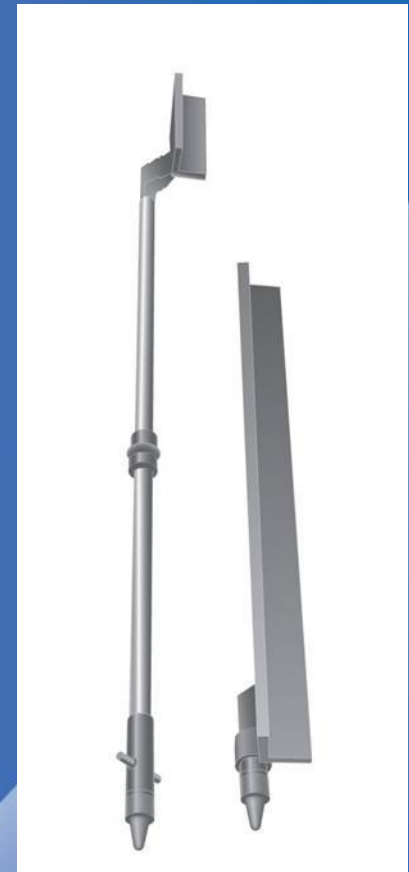
**BROOKHAVEN**  
NATIONAL LABORATORY

*a passion for discovery*



# HFBR Control Rod Blades

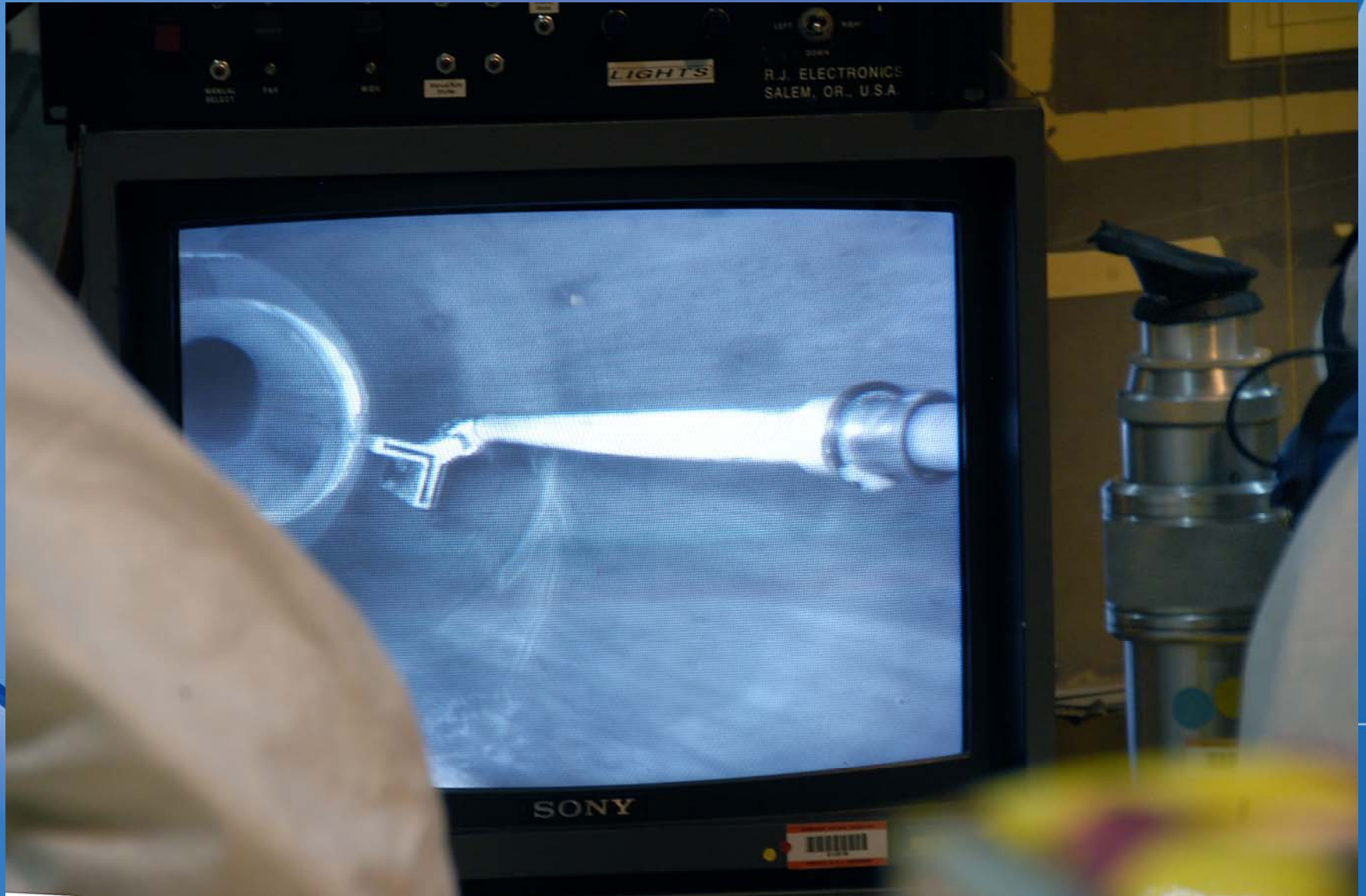
- 8 main blades
  - Removed from reactor vessel
  - Loaded into Shipping Cask CNS 1-13G
  - Shipped to Nevada Test Site (NTS) for disposal
- 8 auxiliary blades
  - Removed from reactor vessel
  - 6 Loaded into shipping cask CNS 1-13G and shipped to NTS
  - 2 Loaded into shipping cask CNS 1-13C along with rod followers awaiting shipment to NTS
- Excellent agreement between measured dose rates and values predicted by activation analysis



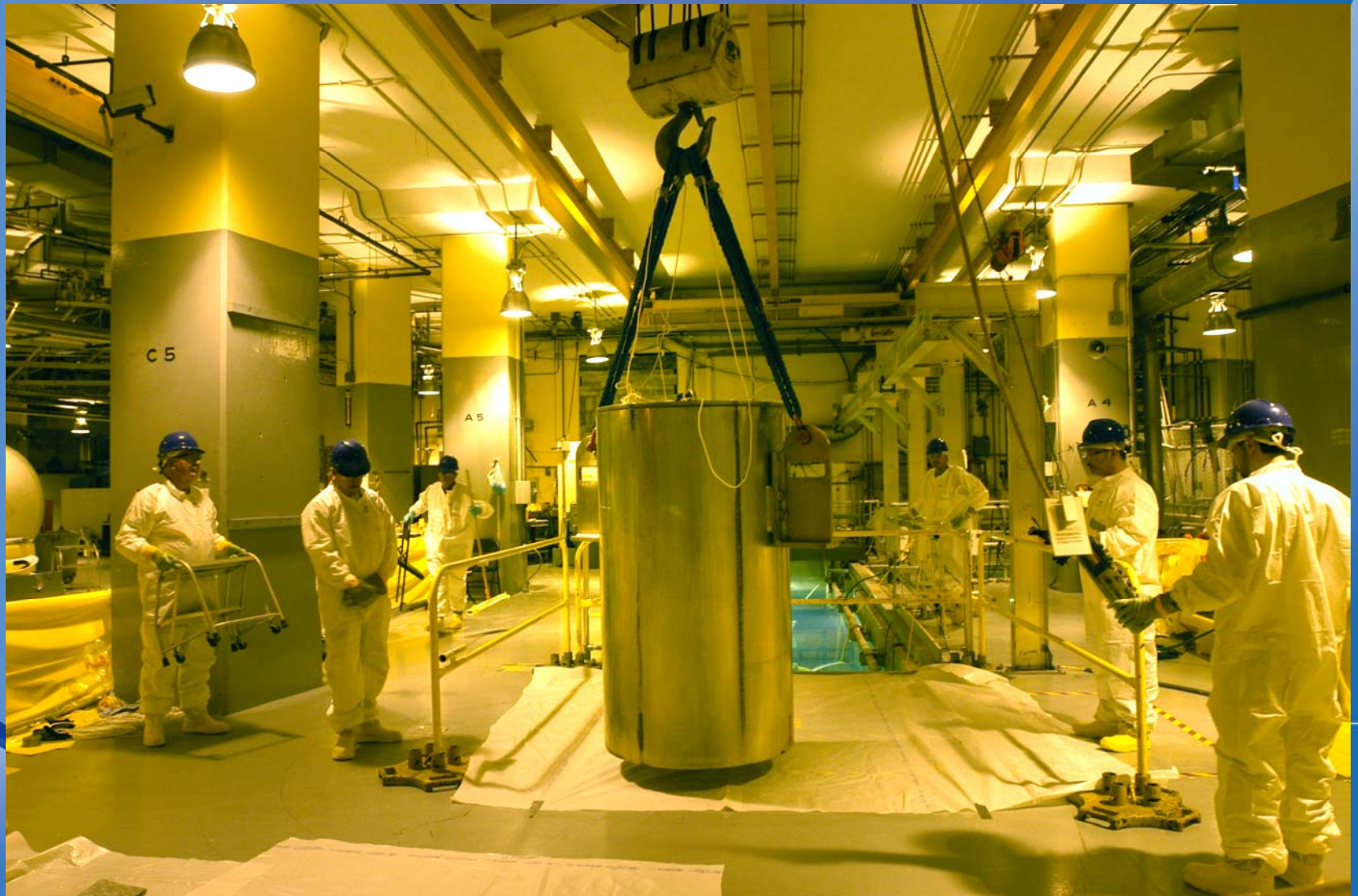
**BROOKHAVEN**  
NATIONAL LABORATORY

*a passion for discovery*

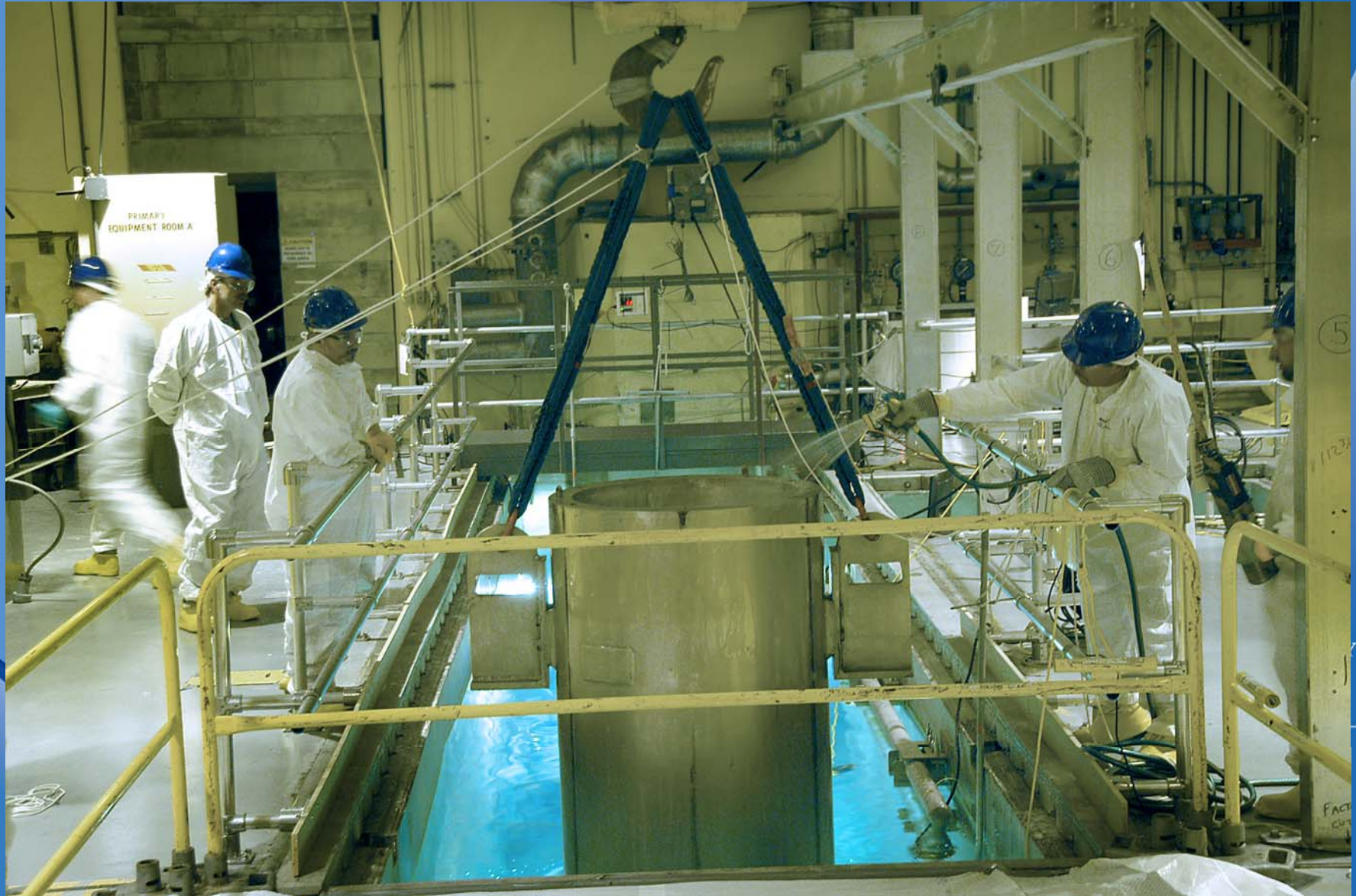
# Auxiliary CRB Removal from Reactor Vessel



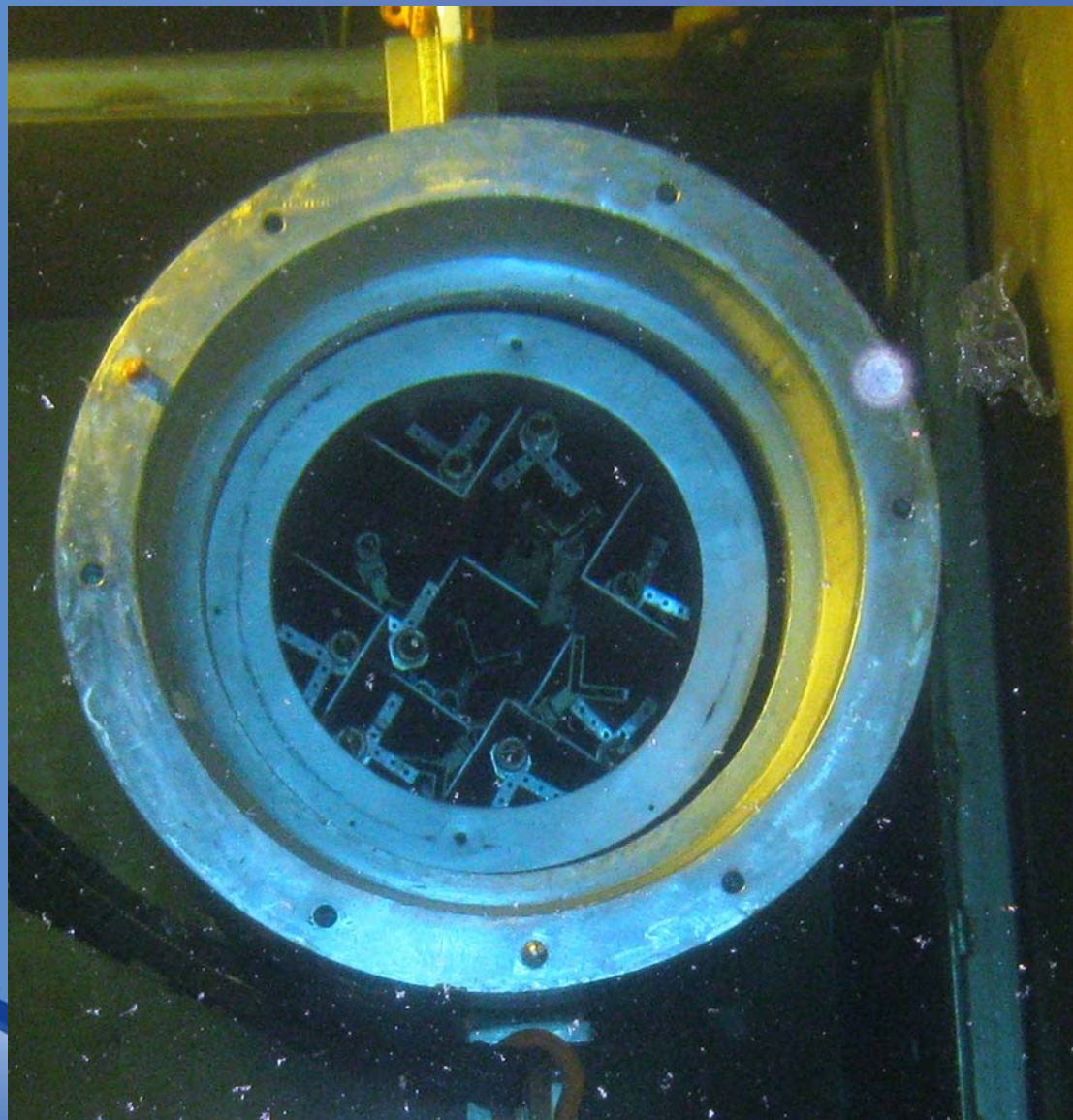
# Shipping Cask being Moved Close to Fuel Pool



# Shipping Cask being Moved Into Fuel Pool



# Shipping Cask with CRBs in Fuel Pool



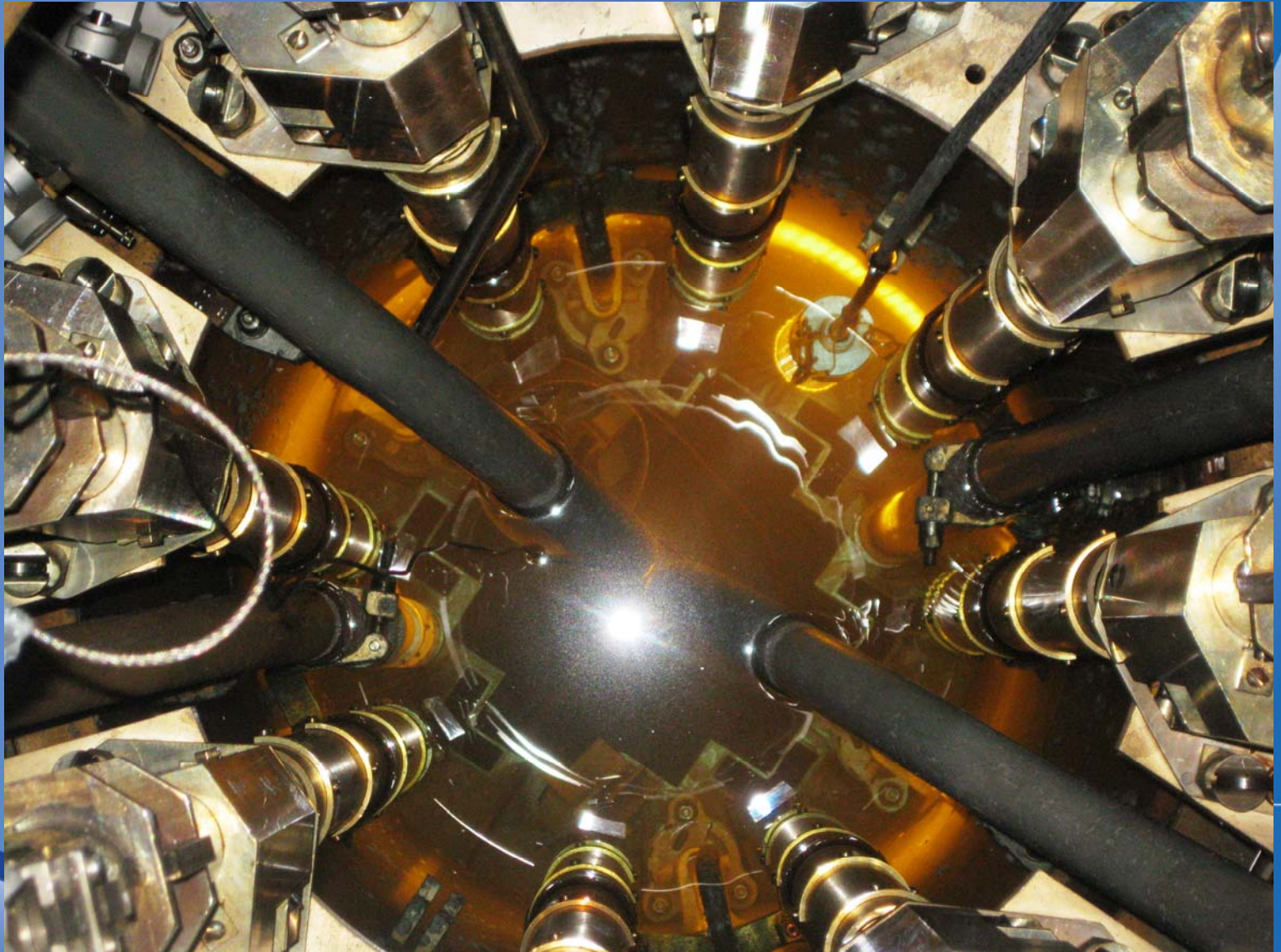
**BROOKHAVEN**  
NATIONAL LABORATORY

*a passion for discovery*

 **Office of Science**  
U.S. DEPARTMENT OF ENERGY



# HFBR Vessel After CRB Removal





# Moving Shipping Cask with CRBs to Transport Trailer



# Shipping Cask with CRBs Ready for the Road



# HFBR Beam Plugs

- 9 beam plugs
  - Beam plug with highest radiological inventory removed from HFBR
  - Loaded into Shipping Cask CNS 3-55
  - Shipped to NTS for disposal
  - Arrived safely at NTS February 23
  - 8 remaining beam plugs to be removed and shipped to NTS/Energy Solutions, Utah

**BROOKHAVEN**  
NATIONAL LABORATORY

*a passion for discovery*

 **Office of  
Science**  
U.S. DEPARTMENT OF ENERGY



# Beam Plug H-9 Being Loaded Into Shipping Cask CNS 3-55



# Preparation of CNS 3-55 for Transport



# CNS 3-55 Ready to Roll



# Part of the HFBR Crew



# Next Steps

- Remove contaminated water from reactor vessel and fuel canal
- Solidify using polymer
- Ship to Energy Solutions, Utah for disposal

**BROOKHAVEN**  
NATIONAL LABORATORY

*a passion for discovery*

 **Office of  
Science**  
U.S. DEPARTMENT OF ENERGY





# BGRR Update

- Preparations continue for graphite pile and bioshield removal



**BROOKHAVEN**  
NATIONAL LABORATORY

*a passion for discovery*



# Asbestos Abatement



Asbestos containing floor tiles were removed from all elevations in contact with the graphite pile

**BROOKHAVEN**  
NATIONAL LABORATORY

*a passion for discovery*

 **Office of  
Science**  
U.S. DEPARTMENT OF ENERGY



# Elevator Demolition



The elevator demolition commenced August 2008 and was completed December 2008

**BROOKHAVEN**  
NATIONAL LABORATORY

*a passion for discovery*

 **Office of Science**  
U.S. DEPARTMENT OF ENERGY



# Balcony Removal



Three balconies attached to the pile had to be removed to install the cranes and CCE

**BROOKHAVEN**  
NATIONAL LABORATORY

*a passion for discovery*

 **Office of Science**  
U.S. DEPARTMENT OF ENERGY



# Conduit and Miscellaneous Services Removal



Numerous conduits and service piping were removed for CCE installation

**BROOKHAVEN**  
NATIONAL LABORATORY

*a passion for discovery*

 **Office of Science**  
U.S. DEPARTMENT OF ENERGY



# New Steel Installed in Elevator Shaft to Support New Cranes



# Columns Erected to Support New Cranes



# Contamination Control Enclosure HEPA Ventilation System



One of the four HEPA units being installed to provide filtration of radioactive airborne particulates during graphite pile removal

**BROOKHAVEN**  
NATIONAL LABORATORY

*a passion for discovery*

 **Office of  
Science**  
U.S. DEPARTMENT OF ENERGY





# HEPA Ventilation Ductwork



# HEPA Ventilation Exhaust Ducts



HEPA ventilation exhausts ducts waiting to be connected to blower trailer

**BROOKHAVEN**  
NATIONAL LABORATORY

*a passion for discovery*

 **Office of  
Science**  
U.S. DEPARTMENT OF ENERGY



# Graphite Pile Removal Control Room



Excavator and gantry crane will be operated remotely from this location

**BROOKHAVEN**  
NATIONAL LABORATORY

*a passion for discovery*

# Next Steps

- Install Crane Girders and Trusses
- Install Excavator Crane
- Install Gantry Crane
- Install CCE
- Complete Installation of Ventilation System
- Test and Approve System for Graphite and Bioshield Removal

**BROOKHAVEN**  
NATIONAL LABORATORY

*a passion for discovery*

 **Office of  
Science**  
U.S. DEPARTMENT OF ENERGY

