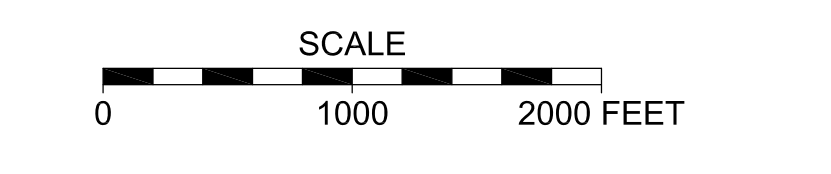


LEGEND

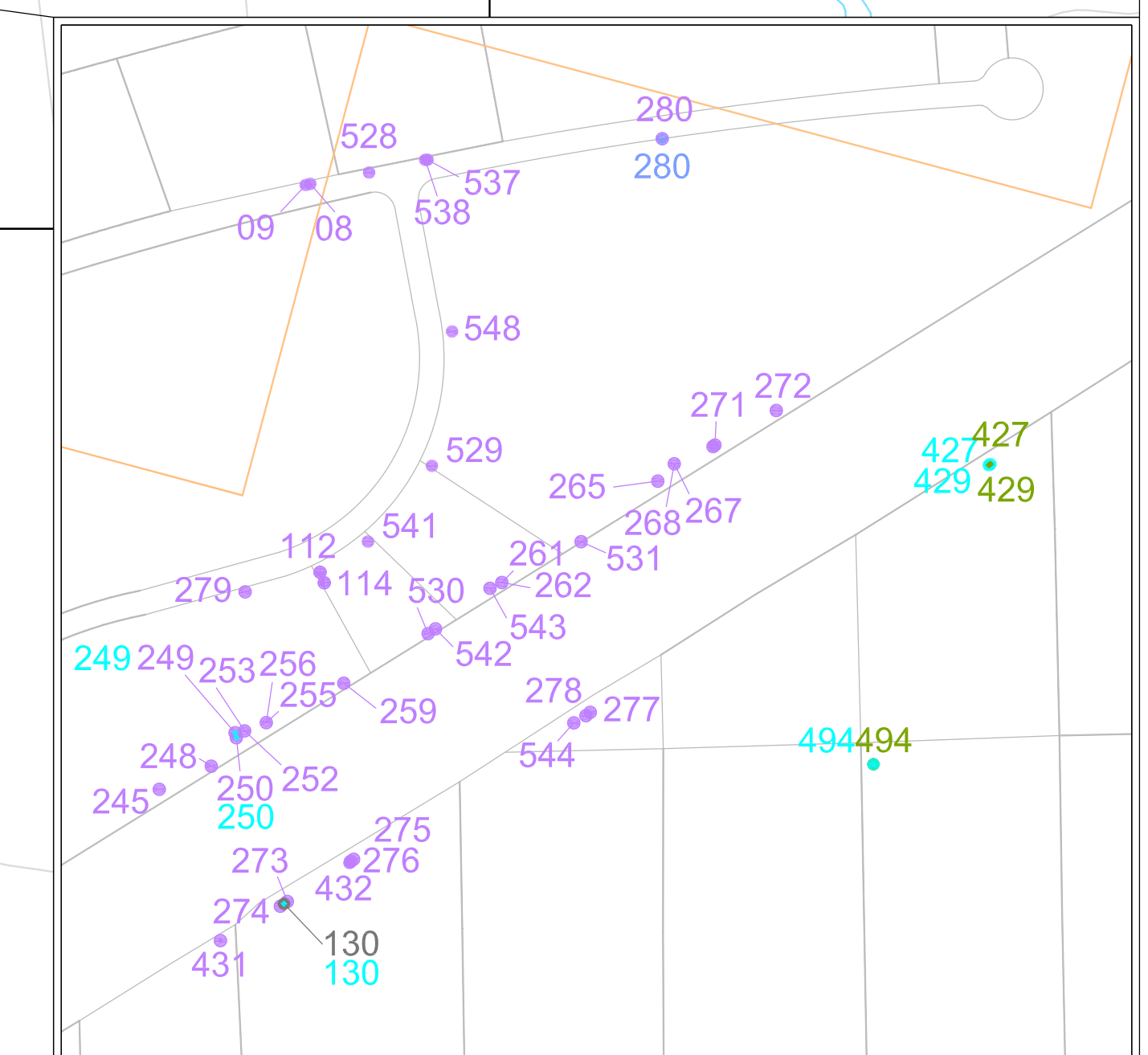
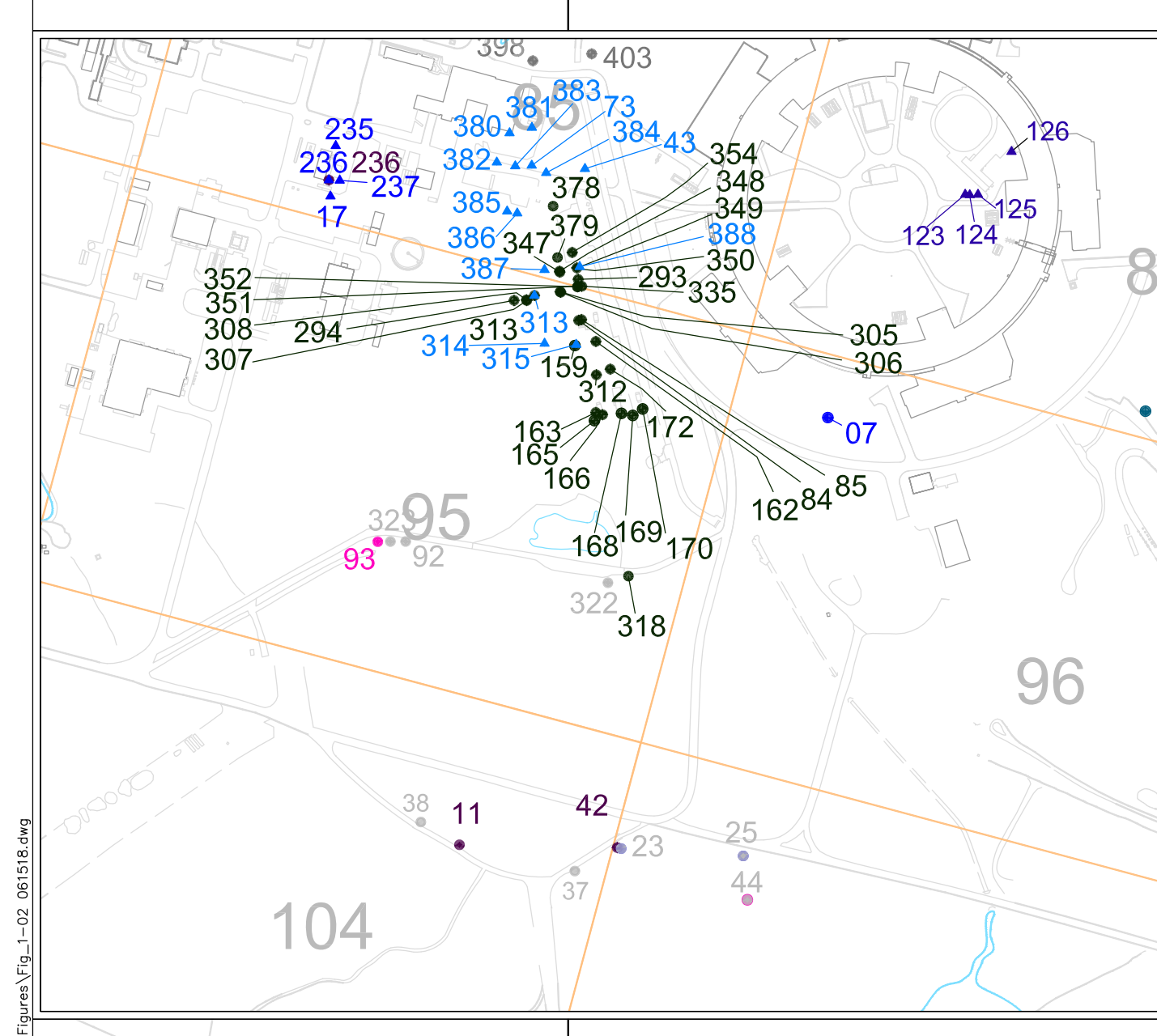
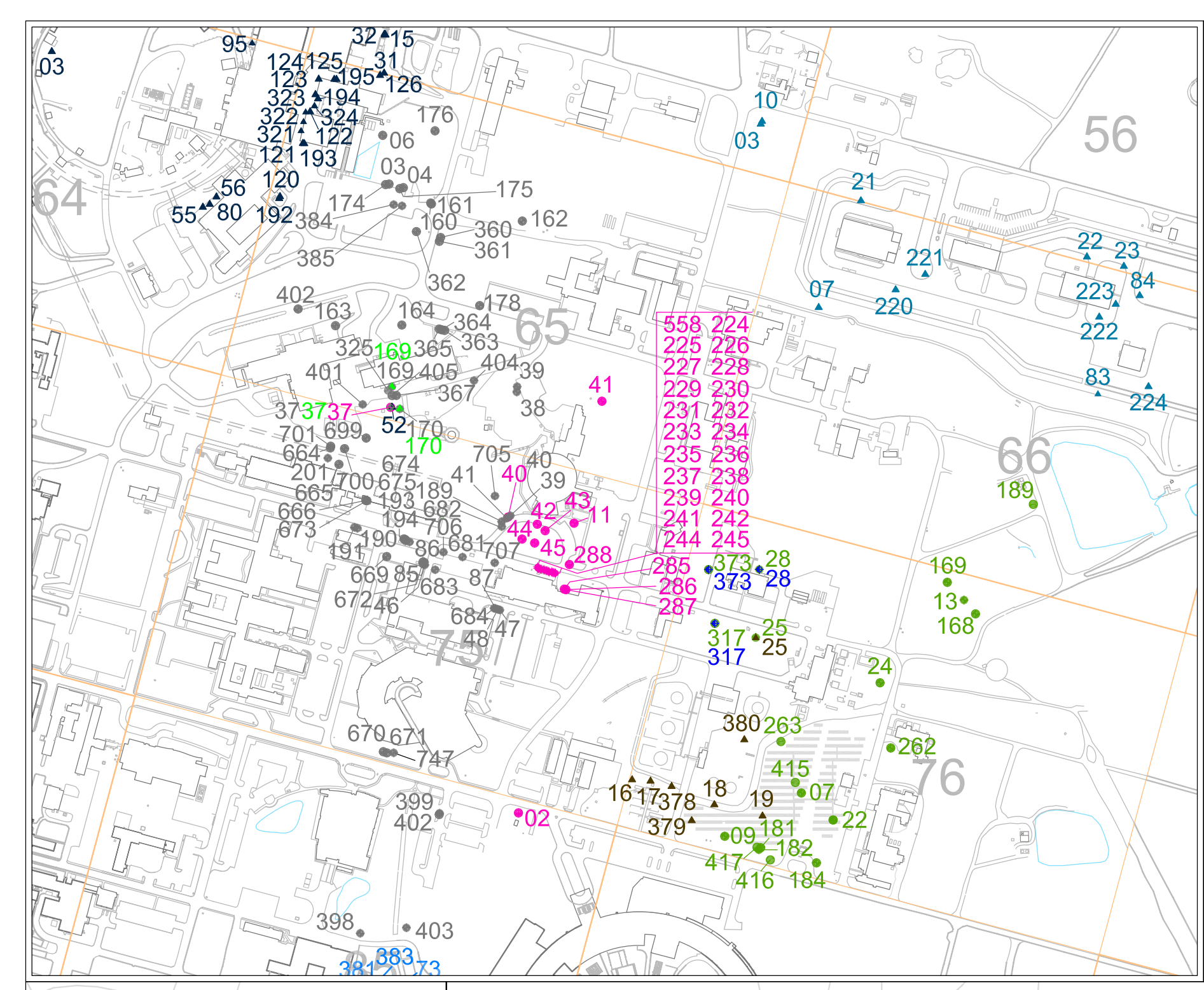
- | | |
|--|--|
| <p>CERCLA MONITORING PROJECTS</p> <ul style="list-style-type: none"> ● OU III (North Street) ● OU III (South Boundary) ● OU III (Central) ● OU III (Middle Road) ● OU III (BGR / WCF Sr-90) ● OU III AOC 29 (HFBR) ● OU III (Industrial Park) ● OU III (Building 96) ● OU III (Western South Boundary) ● OU III (Magothy) ● OU III (Industrial Park East) ● OU III (LIPA) ● OU III (Airport) ● OU III (North Street East) ● OU IV (AOC 5) ● OU IV (AOC 6 Sr-90) ● OU I (South Boundary) ● OU V ● OU V EDB ● Site Background ● Current Landfill ● Former Landfill ● Chemical / Animal Holes Sr-90 | <p>FACILITY MONITORING PROJECTS (ES)</p> <ul style="list-style-type: none"> ▲ AGS Research Areas ▲ BLIP Facility ▲ RHIC Facility ▲ Medical Research Reactor ▲ STP and Peconic River ▲ Major Petroleum Facility ▲ Motor Pool Area ▲ Service Station (Bldg 630) ▲ New Waste Management Facility ▲ Building 452 Freon-11 ▲ National Synchrotron Light Source II |
|--|--|

- BNL Site Boundary
- Surface Water
- Solar Farm Panels

NOTE: Wells monitored under multiple programs are duplicated on the figure for each program under which they are monitored. Latest revision 04-10-17



* Enlarged views are not to scale



1:20250404 13:02 Environmental Protection Division Date: 06/15/18 Project: Groundwater Status Report Figure: 1-2