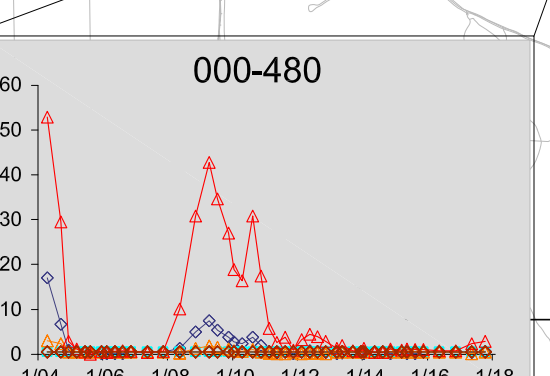
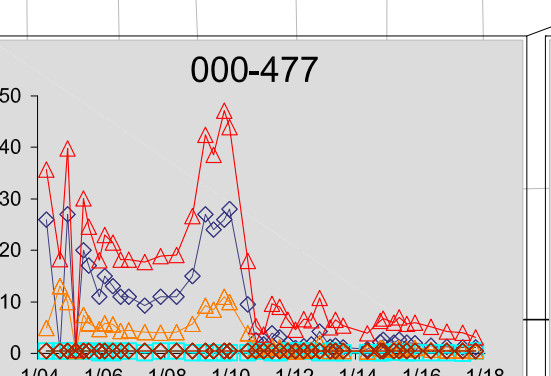
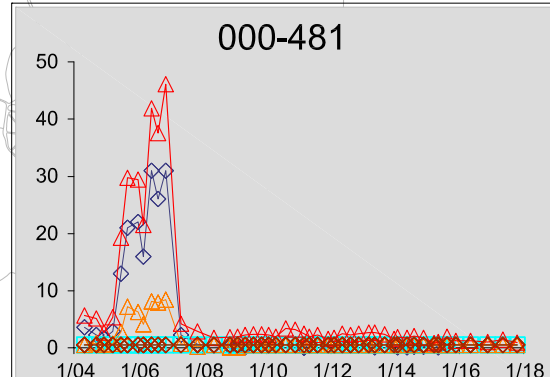
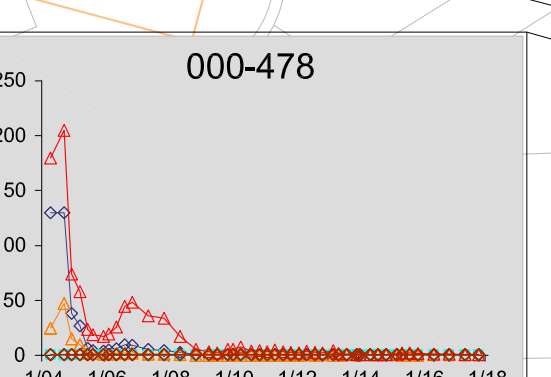
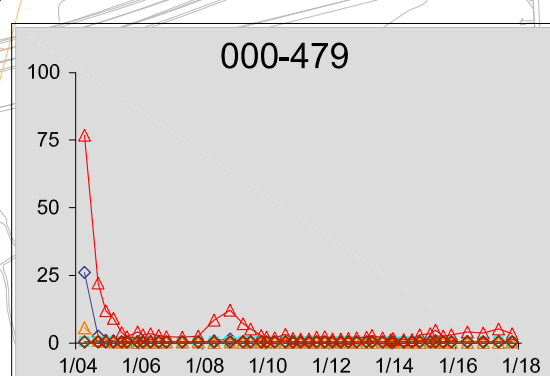
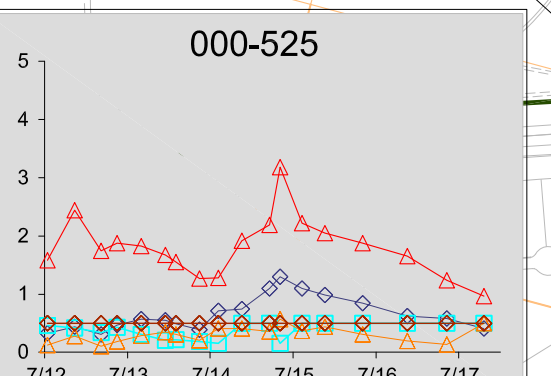
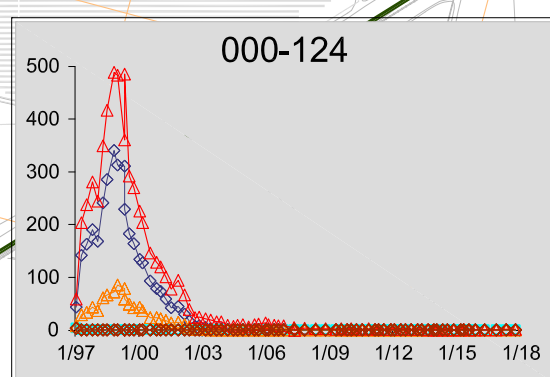
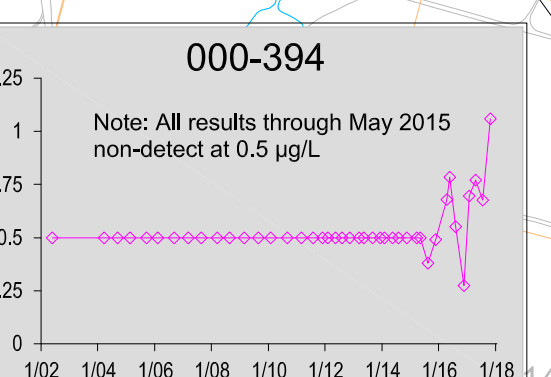
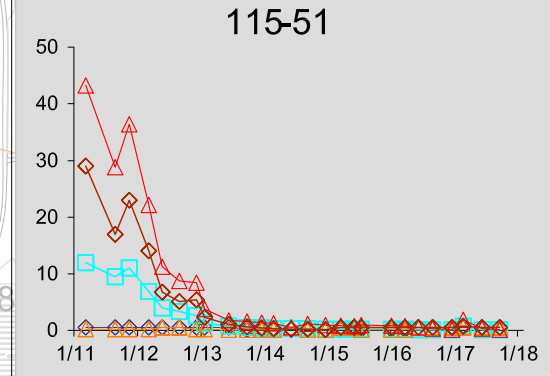
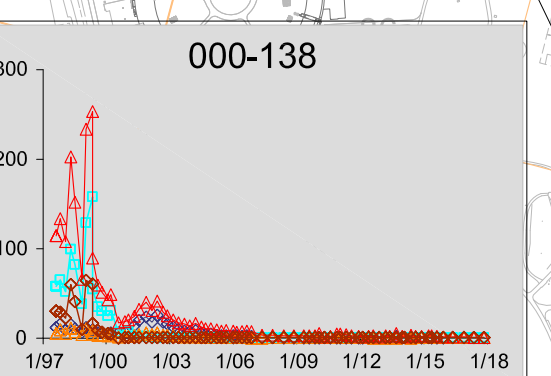
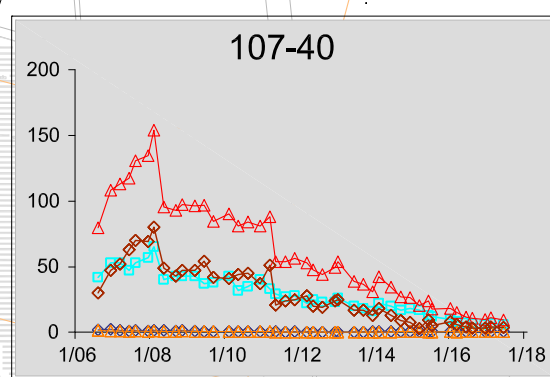
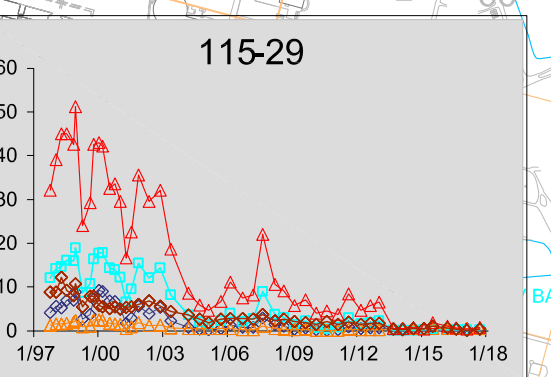
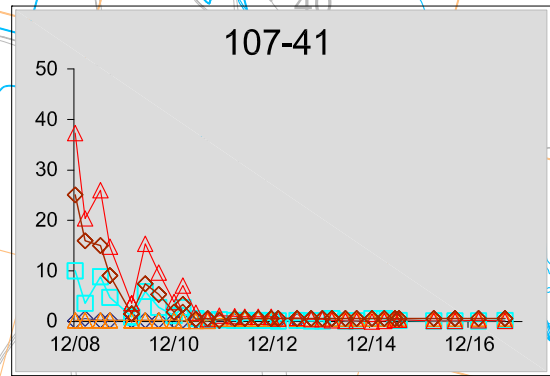
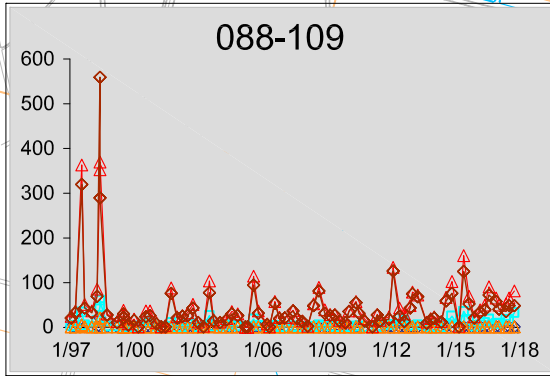
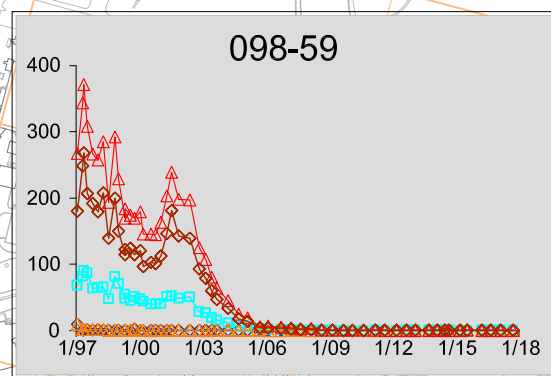
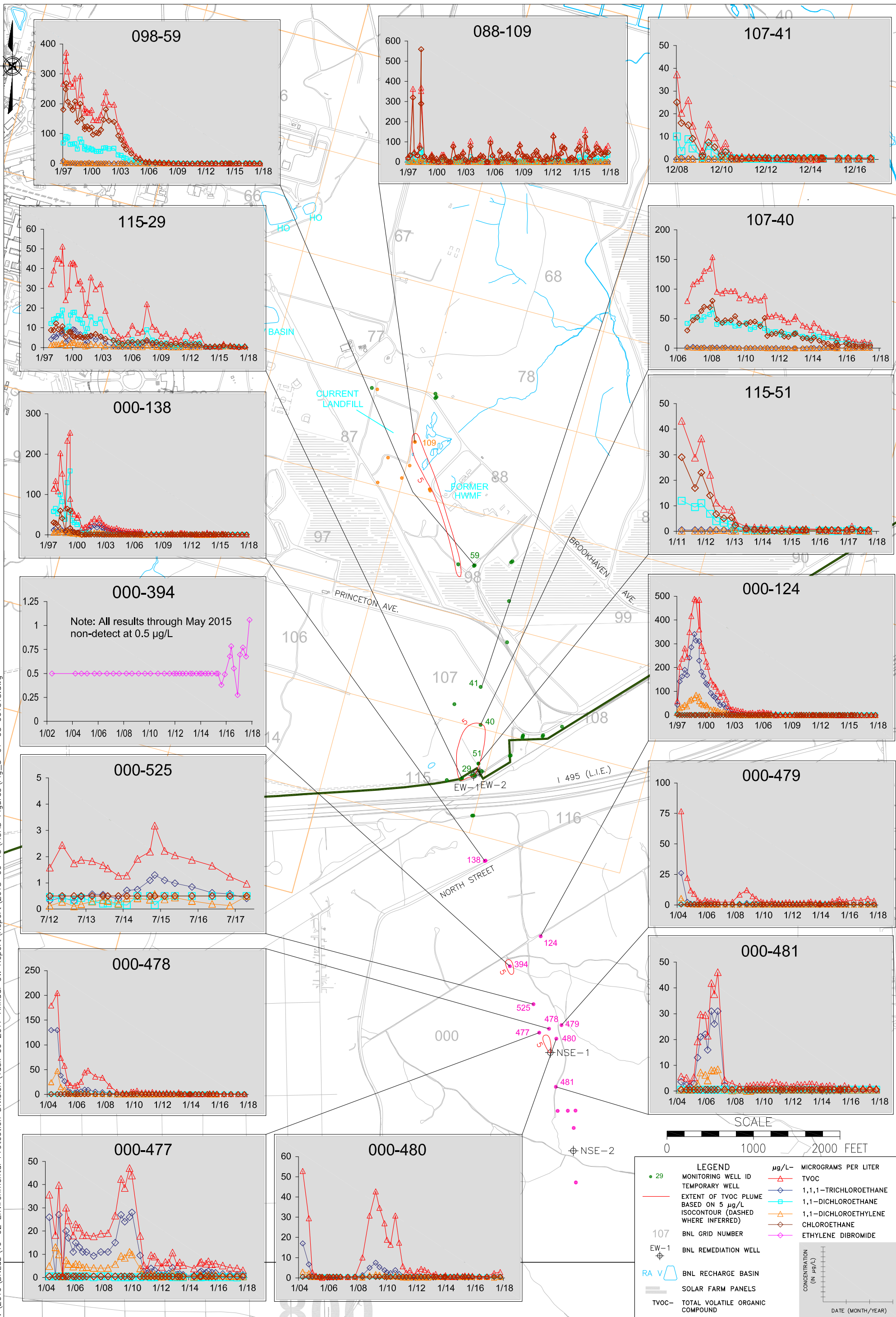


P:\2016\BNLab\16-02 Environmental Protection Division\Task 09 2017 Annual GW Report\Report\2018-06-15\ACAD Figures\Fig_3-01-03_061518.dwg



LEGEND

- 29 MONITORING WELL ID
- TEMPORARY WELL
- EXTENT OF TVOC PLUME BASED ON 5 µg/L ISOCONTOUR (DASHED WHERE INFERRED)
- 107 BNL GRID NUMBER
- EW-1 BNL REMEDIATION WELL
- RA V BNL RECHARGE BASIN
- ☐ SOLAR FARM PANELS
- TVOC- TOTAL VOLATILE ORGANIC COMPOUND

µg/L- MICROGRAMS PER LITER

- △ TVOC
- ◇ 1,1,1-TRICHLOROETHANE
- 1,1-DICHLOROETHANE
- △ 1,1-DICHLOROETHYLENE
- ◇ CHLOROETHANE
- ◇ ETHYLENE DIBROMIDE

SCALE: 0 1000 2000 FEET

CONCENTRATION (IN µg/L) vs. DATE (MONTH/YEAR)

BROOKHAVEN
NATIONAL LABORATORY

ENVIRONMENTAL PROTECTION DIVISION

TITLE: **OU I /CURRENT LANDFILL/ SOUTH BOUNDARY/ NORTH STREET EAST HISTORICAL VOC TRENDS**

2017 BNL GROUNDWATER STATUS REPORT

DWN: AJZ VT:HZ.: DATE: 06/15/18 PROJECT NO.: -

CHKD: JEB APPD: WRD REV.: - NOTES: -

FIGURE NO.: 3.1-3