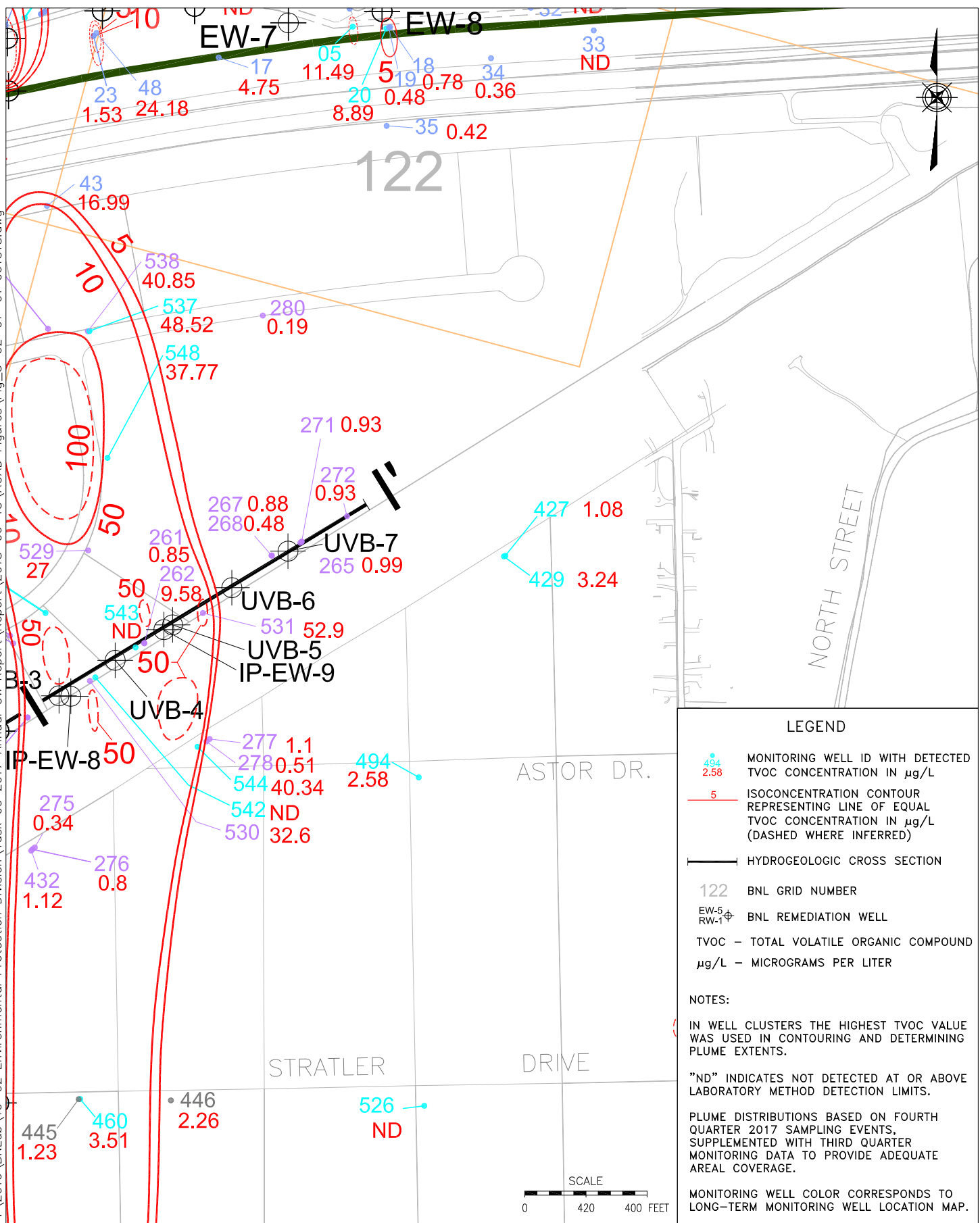


P:\2016\BNLab\16-02 Environmental Protection Division\Task 09 2017 Annual GW Report\Report\2018-06-15\ACAD Figures\Fig_3-02-07-01_061518.dwg



LEGEND

- 494
2.58
MONITORING WELL ID WITH DETECTED TVOC CONCENTRATION IN µg/L
- 5
ISOCONCENTRATION CONTOUR REPRESENTING LINE OF EQUAL TVOC CONCENTRATION IN µg/L (DASHED WHERE INFERRED)
- HYDROGEOLOGIC CROSS SECTION
- 122
BNL GRID NUMBER
- EW-5
RW-1
BNL REMEDIATION WELL
- TVOC - TOTAL VOLATILE ORGANIC COMPOUND µg/L - MICROGRAMS PER LITER

NOTES:

IN WELL CLUSTERS THE HIGHEST TVOC VALUE WAS USED IN CONTOURING AND DETERMINING PLUME EXTENTS.

"ND" INDICATES NOT DETECTED AT OR ABOVE LABORATORY METHOD DETECTION LIMITS.

PLUME DISTRIBUTIONS BASED ON FOURTH QUARTER 2017 SAMPLING EVENTS, SUPPLEMENTED WITH THIRD QUARTER MONITORING DATA TO PROVIDE ADEQUATE AREAL COVERAGE.

MONITORING WELL COLOR CORRESPONDS TO LONG-TERM MONITORING WELL LOCATION MAP.



TITLE:
**OU III INDUSTRIAL PARK EAST AREA,
 TVOC PLUME DISTRIBUTION**
 2017 BNL GROUNDWATER STATUS REPORT

DWN: AJZ	VT:HZ.: —	DATE: 06/15/18	PROJECT NO.: —
CHKD: JEB	APPD: WRD	REV.: —	NOTES: —
FIGURE NO.:			3.2.7-1