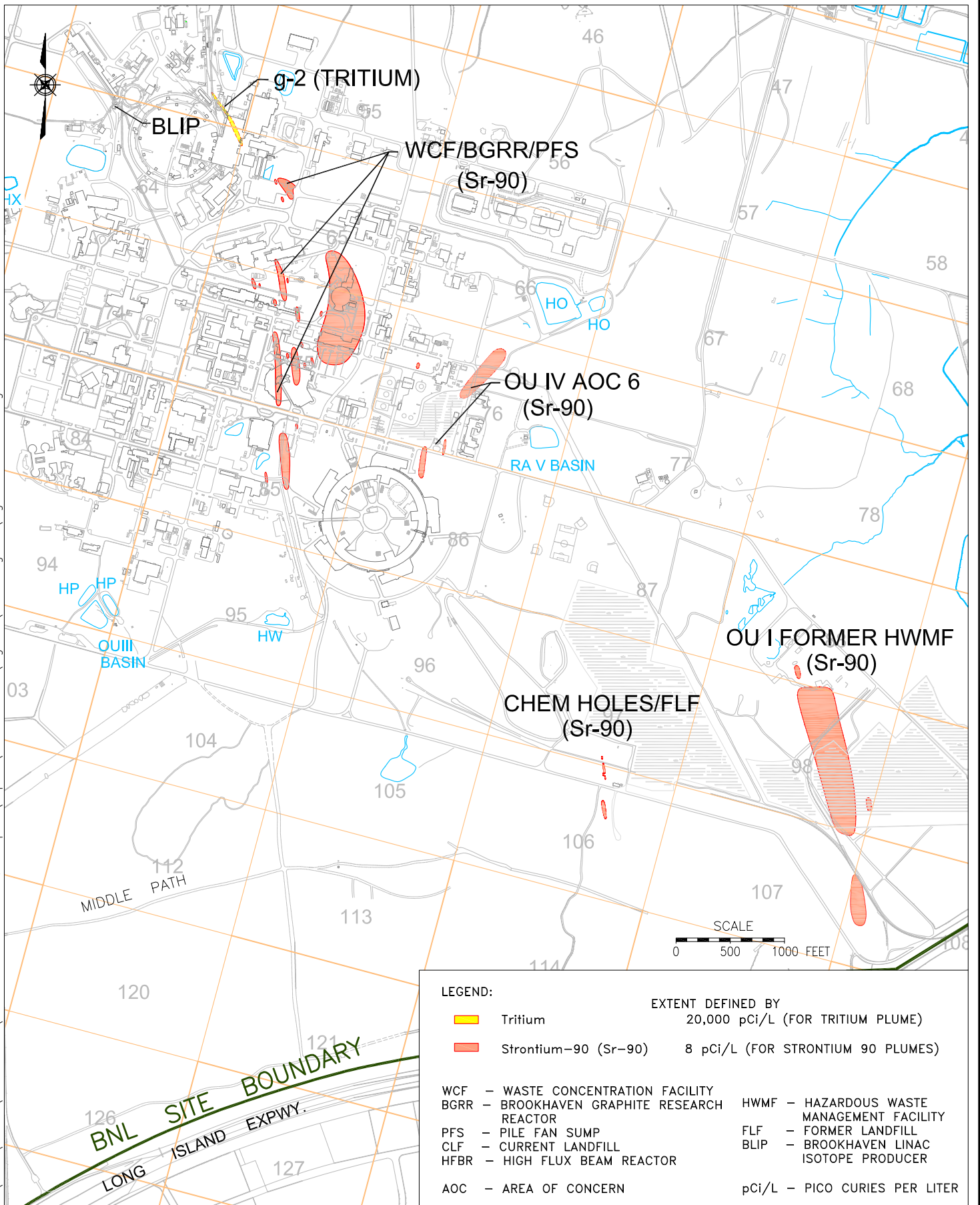


P:\2016\BNLab\16-02 EPD\Task 25 2019 Annual GW Report\Report\2020-06-12\Figures\ACAD Figures\Fig E-2_061220.dwg



LEGEND:

█ Tritium	EXTENT DEFINED BY 20,000 pCi/L (FOR TRITIUM PLUME)
█ Strontium-90 (Sr-90)	8 pCi/L (FOR STRONTIUM 90 PLUMES)

WCF - WASTE CONCENTRATION FACILITY	HWMF - HAZARDOUS WASTE MANAGEMENT FACILITY
BGR - BROOKHAVEN GRAPHITE RESEARCH REACTOR	FLF - FORMER LANDFILL
PFS - PILE FAN SUMP	BLIP - BROOKHAVEN LINAC ISOTOPE PRODUCER
CLF - CURRENT LANDFILL	
HFBR - HIGH FLUX BEAM REACTOR	
AOC - AREA OF CONCERN	pCi/L - PICO CURIES PER LITER



TITLE:
**2019 EXTENT OF PRIMARY
 BNL RADIONUCLIDE PLUMES**
 2019 BNL GROUNDWATER STATUS REPORT

DWN: AJZ	VT:HZ.: -	DATE: 06/12/20	PROJECT NO.: -
CHKD: WRD	APPD: WRD	REV.: -	NOTES: -
FIGURE NO.:		E-2	