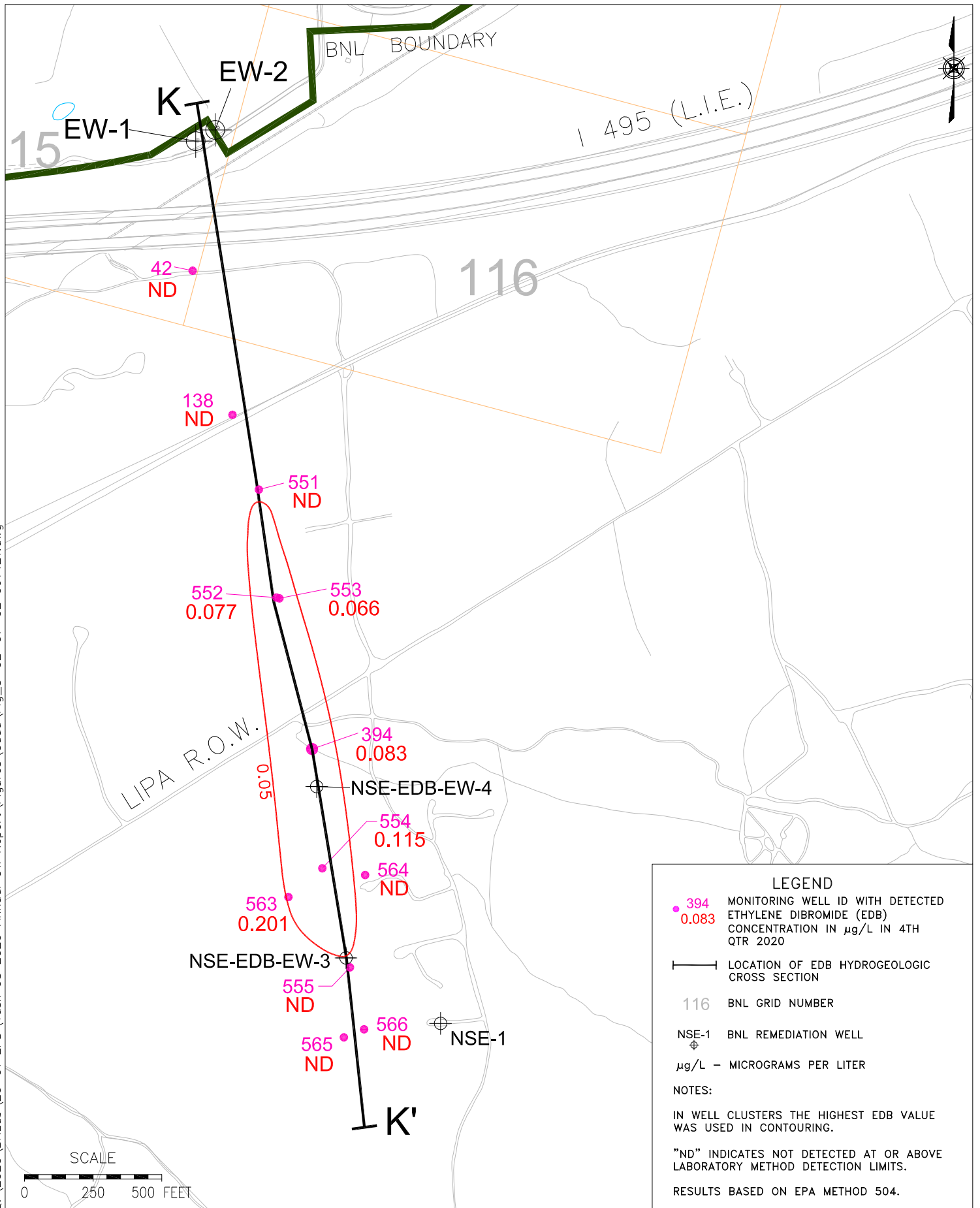


Q:\2020\BNLab\20-01 EPD\Task 08 2020 Annual GW Report\Figures\Cadd\Fig\_3-02-07-02 061421.dwg



**LEGEND**

- 394 MONITORING WELL ID WITH DETECTED ETHYLENE DIBROMIDE (EDB) CONCENTRATION IN  $\mu\text{g/L}$  IN 4TH QTR 2020
- 0.083
- $\text{---|---}$  LOCATION OF EDB HYDROGEOLOGIC CROSS SECTION
- 116 BNL GRID NUMBER
- NSE-1 BNL REMEDIATION WELL
- $\mu\text{g/L}$  - MICROGRAMS PER LITER

NOTES:

IN WELL CLUSTERS THE HIGHEST EDB VALUE WAS USED IN CONTOURING.

"ND" INDICATES NOT DETECTED AT OR ABOVE LABORATORY METHOD DETECTION LIMITS.

RESULTS BASED ON EPA METHOD 504.



TITLE:  
**OU III NORTH STREET EAST  
EDB PLUME DISTRIBUTION**

2020 BNL GROUNDWATER STATUS REPORT

DWN: AJZ	VT:HZ.: -	DATE: 04/02/21	PROJECT NO.: -
CHKD: WRD	APPD: WRD	REV.: 06/14/21	NOTES: -
FIGURE NO.:			3.2.7-2