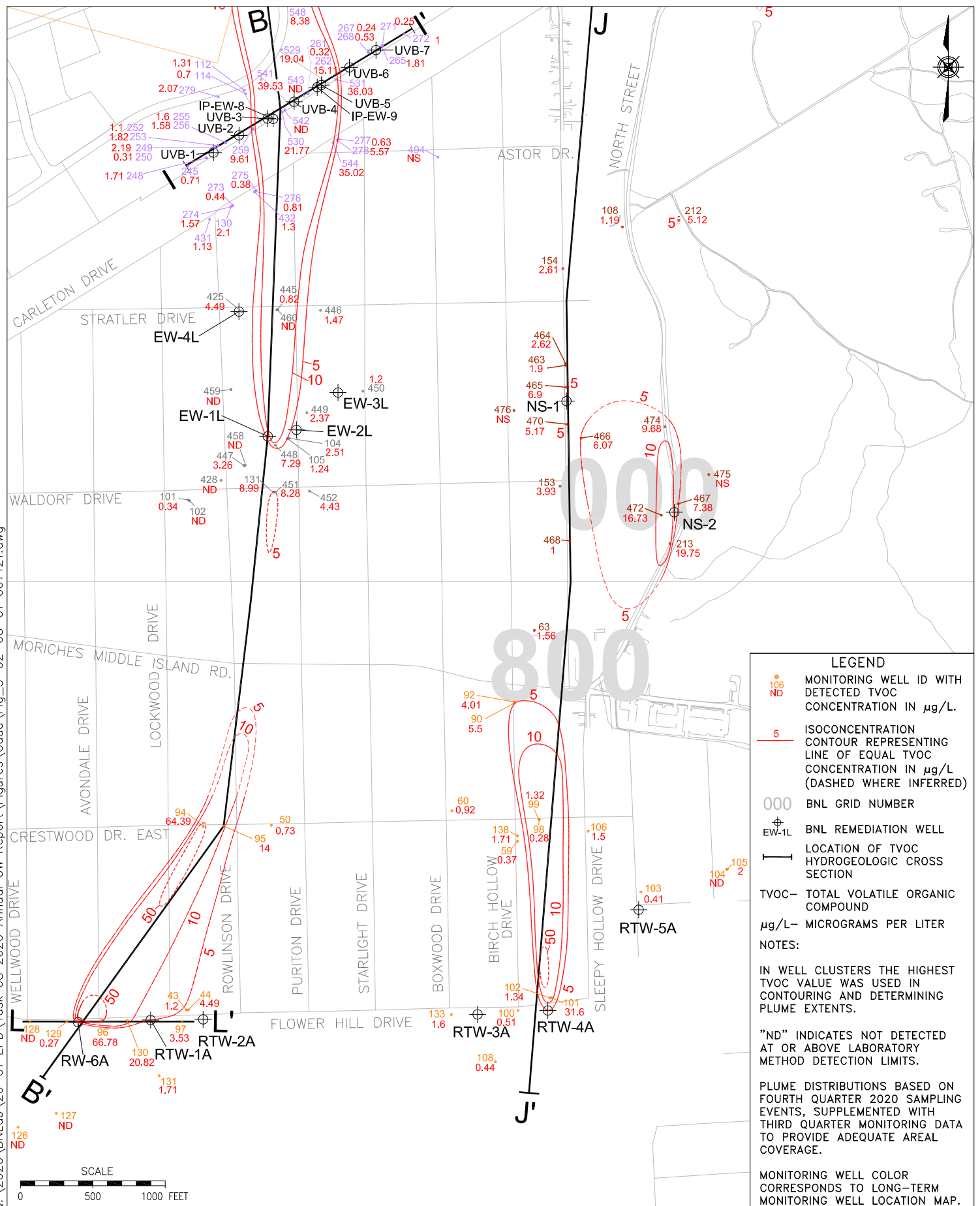


C:\2020\BNLab\20-01 EPD\Task 08 2020 Annual GW Report\Figures\Cadd\Fig\_3-02-08-01 061421.dwg



**LEGEND**

- 106 ND MONITORING WELL ID WITH DETECTED TVOC CONCENTRATION IN µg/L.
- 5 ISOCONCENTRATION CONTOUR REPRESENTING LINE OF EQUAL TVOC CONCENTRATION IN µg/L (DASHED WHERE INFERRED)
- 000 BNL GRID NUMBER
- ⊕ EW-1L BNL REMEDIATION WELL
- LOCATION OF TVOC HYDROGEOLOGIC CROSS SECTION
- TVOC— TOTAL VOLATILE ORGANIC COMPOUND
- µg/L— MICROGRAMS PER LITER
- NOTES:
- IN WELL CLUSTERS THE HIGHEST TVOC VALUE WAS USED IN CONTOURING AND DETERMINING PLUME EXTENTS.
- "ND" INDICATES NOT DETECTED AT OR ABOVE LABORATORY METHOD DETECTION LIMITS.
- PLUME DISTRIBUTIONS BASED ON FOURTH QUARTER 2020 SAMPLING EVENTS, SUPPLEMENTED WITH THIRD QUARTER MONITORING DATA TO PROVIDE ADEQUATE AREAL COVERAGE.
- MONITORING WELL COLOR CORRESPONDS TO LONG-TERM MONITORING WELL LOCATION MAP.



TITLE:

OU III LIPA/AIRPORT  
TVOC PLUME DISTRIBUTION

2020 BNL GROUNDWATER STATUS REPORT

DWN:	AJZ	VT.HZ.:	—	DATE:	04/02/21	PROJECT NO.:	—
CHKD:	WRD	APPD:	WRD	REV.:	06/14/21	NOTES:	—
FIGURE NO.:						3.2.8-1	